

Techo-Bloc
Precious Stones™



SPECTACULAR
LANDSCAPE PRODUCTS



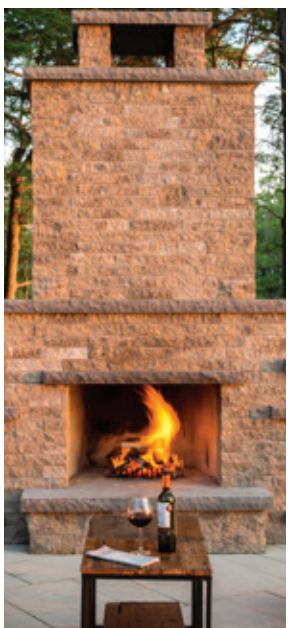
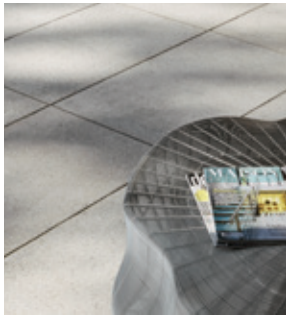
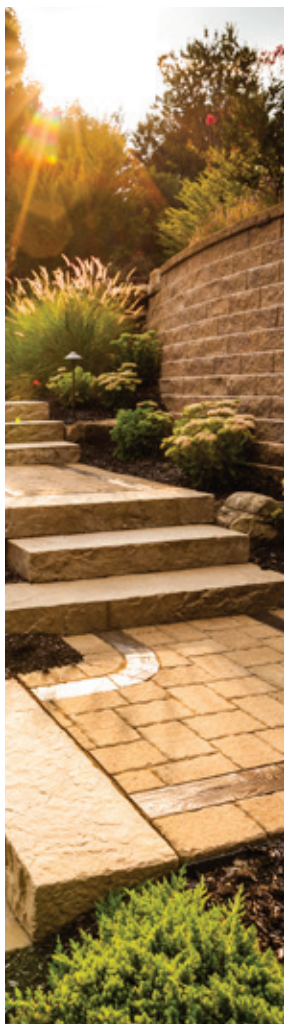
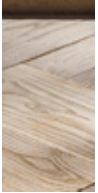
Contents

CONTENTS

See it. Feel it. Build it. Live it.	2	Röcka wall & edge double-sided	86
Trend Report	4	Suprema split face wall	87
English Garden	6	Semma wall collection	88
Country Rustic	10		
Contemporary	14		
Polished Casual	18		
Euro Flair	22		
SLABS	26	CAPS	90
Aberdeen slab collection	28	Compatibility chart	92
Blu 60 mm slate collection	30	Aged cap double-sided	94
Blu 60 mm galaxy, polished & smooth slab NEW	32	Architectural double-sided cap NEW	95
Borealis slab collection	34	Bali Travertina pool coping	96
Inca slab	36	Brandon cap NEW	97
Industria slab	37	Bullnose cap & pool coping	98
Maya slab	38	Bullnose grande cap & pool coping NEW	99
Monticello slab collection	39	Escala 3.5" cap	100
Travertina slab collection	40	Graphix reversible cap NEW	101
Para slab collection	42	Piedimonte cap collection double-sided	102
Tux slab collection	43	Portofino cap double-sided	103
		Prima 14" split face & polished cap	104
		Raffinato cap double-sided	105
		Stonedge pillar cap	106
		York cap	107
PAVERS	44	STEPS & OVERLAY SYSTEM	108
Antika paver	46	Borealis step	110
Blu 80 mm slate paver collection	48	Maya step	112
Blu 80 mm galaxy, polished & smooth paver NEW	50	Raffinato step	113
Eva paver	52	Röcka step collection	114
Flagstone paver	53	York step	115
Industria polished, smooth & granitex paver	54	Blu 45 mm slate & smooth overlay system	116
Linea paver collection	56	Venetian slate & smooth overlay system	117
Mista paver collection	57		
San marino paver collection	58	EDGES	118
Victorien paver collection	59	Avignon edge	120
Villagio paver	60	Borealis wall & edge	120
Legacy collection	62	Brandon edge	121
Allegro paver	62	Pietra edge	122
Parisien paver	63	Raffinato pillar & edge	122
		Röcka wall & edge	123
		Tundra edge	123
PERMEABLE PAVERS	64	OUTDOOR FEATURES	124
Antika paver	66	Grill Island	126
Blu 60 & 80 mm galaxy, polished, slate & smooth NEW	67	Manchester Foyer fire place	127
Mista Random paver	68	Manchester Elite pizza oven	128
Victorien 60 mm permeable paver	69	Manchester Rustic pizza oven	128
Pure permeable paver	70	Raffinato pizza oven	129
Villagio permeable paver	71	Forno oven	129
		Prescott fire pit	130
WALL	72	Raffinato fire pit	131
Baltimore wall collection double-sided	74	Valencia fire pit	132
Borealis wall & edge double-sided	75	Brandon fire pit collection NEW	134
Brandon wall collection double-sided NEW	76		
Escala wall double-sided	78	Colour Coordinate	136
Graphix wall double-sided	79	Warranty	138
Manchester wall double-sided	80	Other Products	140
Prescott wall collection double-sided	81		
Mini-Creta Architectural wall collection double-sided	82		
Mini-creta wall collection double-sided	83		
Raffinato wall collection double-sided	84		

LEGEND

 TECHO-BLOC WARRANTY	 DE-ICING SALT RESISTANT	 USE VIBRATING PLATE	 PERMEABLE PAVERS
 STONEDGE WARRANTY	 DO NOT USE DE-ICING SALT	 DO NOT USE VIBRATING PLATE	 STONE TO STONE TONE DISTRIBUTION



SEE IT.

Browse our **product collections** for design ideas & inspirations

FEEL IT.

Find an **authorized dealer** near you to see the product & get pricing

BUILD IT.

Get a **free consultation** with a **Techo-Bloc certified installer**


LIVE IT.

Redefine your landscape to redefine the way you live



T E C H O - B L O C . C O M





SPEC TACULAR

REDEFINING LANDSCAPE PRODUCTS



TREND REPORT ›

ENGLISH GARDEN

English Garden



Chair: gardencottage.com

Timeless Beauty

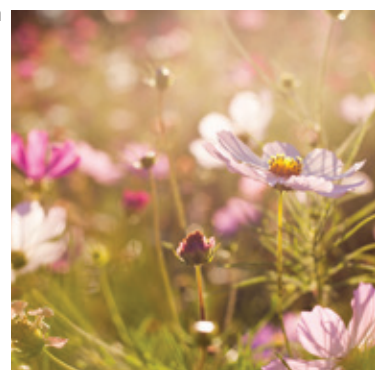
The English culture is one of traditionalism prizing enduring beauty and practicality. This modernized English Garden uses lush, colourful flora to soften robust & highly-textured walls like the timeless Baltimore & Röcka wall collections. Organics like thyme, grass and moss flow between large slate-textured Aberdeen concrete slabs and cobblestone look-a-like Antika pavers for touches of unbridled beauty that remain true to nature.



BALTIMORE wall, shale grey



ABERDEEN slab, rock garden brown





↑ RÖCKA wall, rock garden brown



↑ RÖCKA step, rock garden brown
Furniture: gardencottage.com



↑ ABERDEEN slab, azzurro • PIETRA edge & ANTIKA paver, sandlewood

Furniture: avency.ca

Refer to the **ENGLISH GARDEN Style Lab** on the next page for more ideas. →

English Garden



MAKE IT YOURS

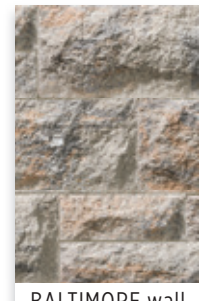
ACCESSORIES



PRESCOTT fire pit



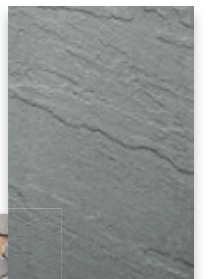
TEXTURES



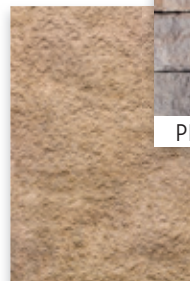
BALTIMORE wall



PRESCOTT wall



ABERDEEN



PIETRA edge



RÖCKA step

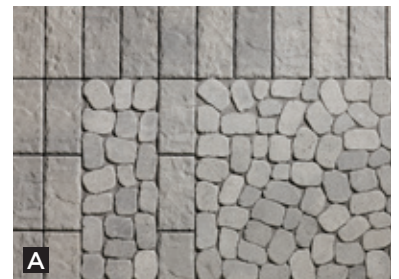


ANTIKA





MOSAÏKS



- A** BLU 60 mm slate slab (6" × 13"), shale grey • ANTIKA paver, shale grey
- B** RAFFINATO cap, greyed nickel • SEMMA wall, shale grey
- C** ANTIKA paver, shale grey • INCA slab, victoria

- D** SAN MARINO paver small rectangles, shale grey
- E** ABERDEEN slab (30 × 30), rock garden brown

Country
COUNTRY
Rustic
TRY
RUSTIC
TIC



Chair: gardencottage.com



BOREALIS slab, hazelnut brandy & smoked pine



CUSTOM 180 MM BRANDON fire pit & EVA slab, champlain grey

Cottage Vibes

Nothing embodies rustic like the raw texture of wood. The Borealis stone collection pushes the envelope on traditional landscape products by capturing the look & feel of wood. This splinter-free, weather-resistant and maintenance-free alternative is more durable & more practical than its natural counterpart. Creating elements of elevation the Brandon wall is among the most-versatile and well-suited for rustic outdoor design. Its highly-textured rock face and multi-dimensional hues merge together creating remarkably functional outdoor features for backyard bonfires (Brandon Fire Pit) & early evening cookouts (Brandon wall Pizza Oven).



↑ BRANDON wall, champlain grey



↑ BRANDON wall, champlain grey

Refer to the **COUNTRY RUSTIC Style Lab** on the next page for more ideas. →

Country Rustic



MAKE IT YOURS



ACCESSORIES



BRANDON SQUARE fire pit



Chair: gardencottage.com

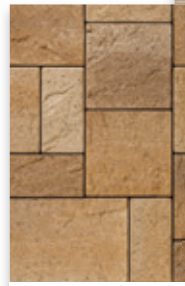
TEXTURES



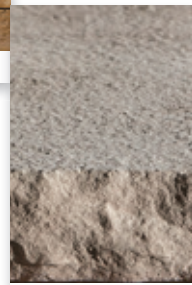
BOREALIS



BRANDON wall



EVA



YORK cap



VILLAGIO



MOSAĪKS



A PRESCOTT wall (2.25" and 4.5"), rock garden brown • PORTOFINO cap, chocolate brown

B BOREALIS slab, smoked pine and hazelnut brandy

C MISTA paver square & random, chestnut brown and harvest gold

D BLU 60mm slab slate, champlain grey • BOREALIS slab, smoked pine

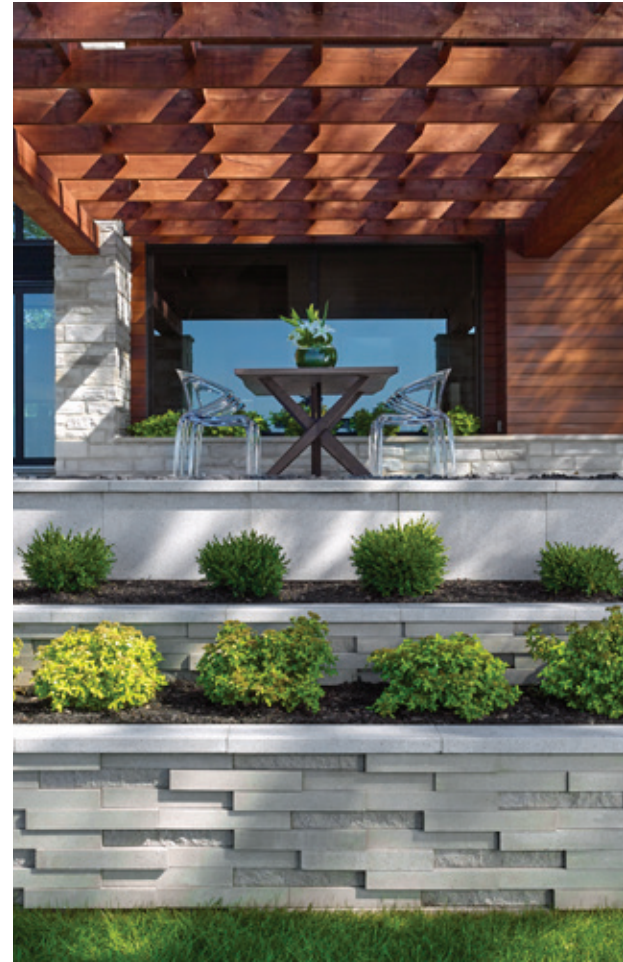
E VILLAGIO paver, chocolate brown and chestnut brown

Contemporary

CON TEM PO RARY



Chair: roche-bobois.com



GRAPHIX wall, greyed nickel • Cap: BLU GRANDE Polished, greyed nickel



RAFFINATO cap, greyed nickel

Modernscaping: Sleek & Monochromatic

Modernscaping takes a controlled and minimalistic approach to design with clean lines, pristine surfaces and a monochrome colour palette. Techo-Bloc's polished texture, like the Blu Grande polished slab featured here, is buffed for a sleek finish, allowing the fine aggregates within the slab to catch the light and sparkle. The eye-catching Graphix wall uses contrast in depth, form & texture to create a three-dimensional effect. The mix of smooth and chiseled textures are a first & create visual interest perfect for design lovers and those seeking something modern and out of the box.



↑ BLU GRANDE Polished, greyed nickel



↑ BLU GRANDE Polished, greyed nickel



↑ GRAPHIX wall, greyed nickel • Cap: BLU GRANDE Polished, greyed nickel

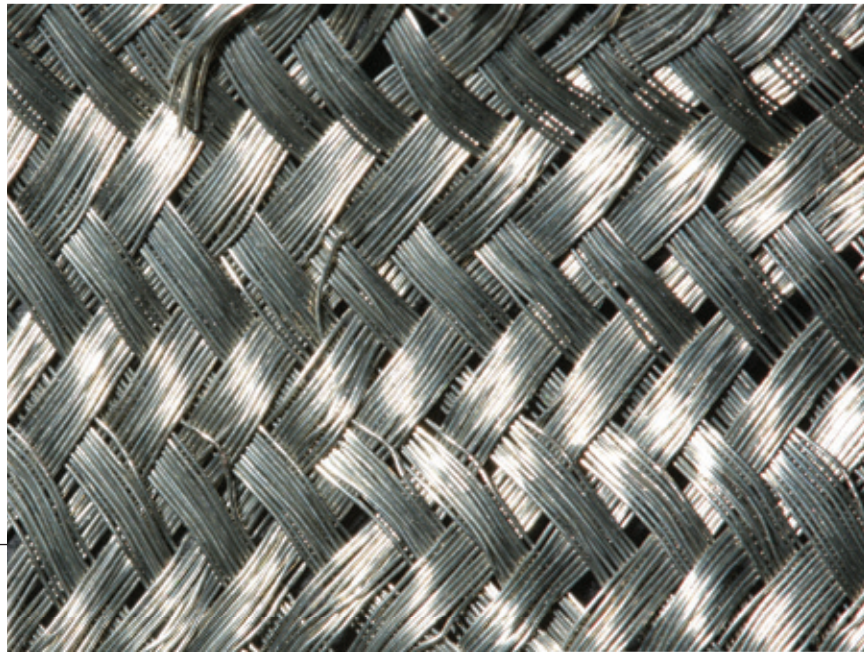
Refer to the **CONTEMPORARY Style Lab** on the next page for more ideas. →

All furniture: Roche-bobois.com

Contemporary



MAKE IT YOURS



ACCESSORIES



RAFFINATO fire pit



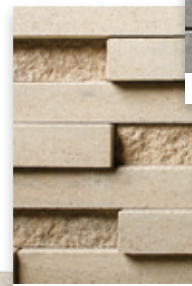
Chair: roche-bobois.com

Side table: roche-bobois.com

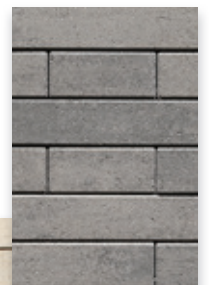
TEXTURES



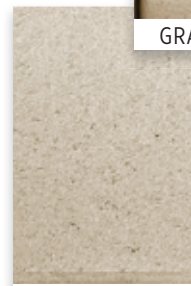
INDUSTRIA smooth



GRAPHIX Wall



LINEA



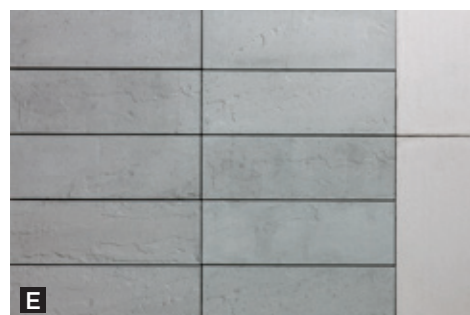
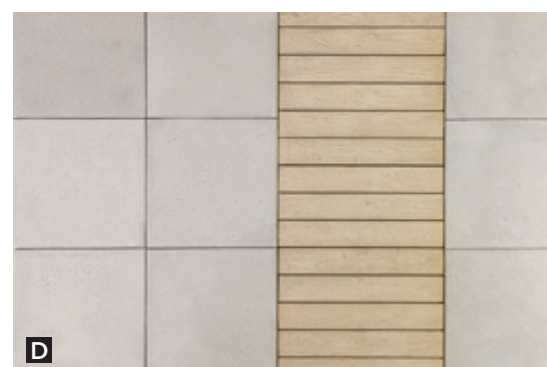
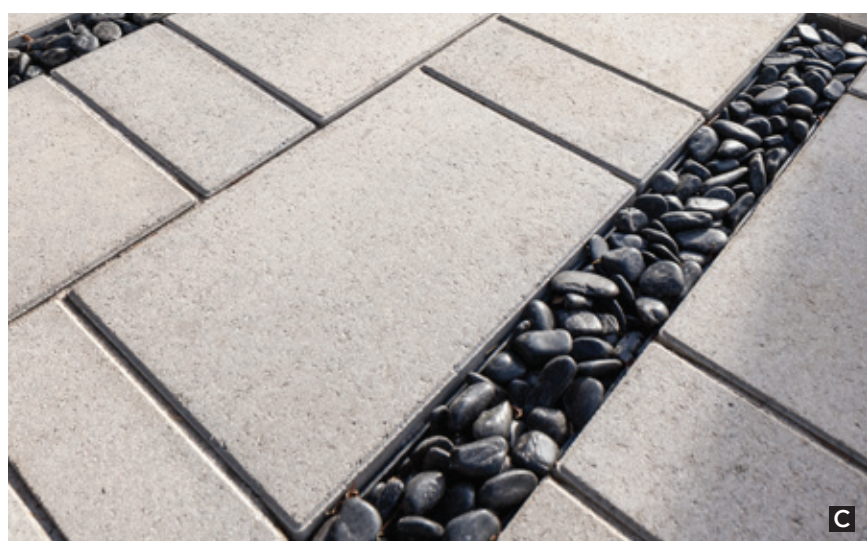
RAFFINATO



PIEDIMONTE



MOSAĪKS



A RAFFINATO 180 mm smooth wall, onyx black • RAFFINATO 90 mm smooth wall, greyed nickel • RAFFINATO cap, onyx black

B BLU 80 mm smooth paver, greyed nickel • LINEA paver small rectangles, onyx black

C BLU 60 mm smooth slab, greyed nickel

D INDUSTRIA 600 slab, greyed nickel • BOREALIS slab, hazelnut brandy

E ABERDEEN slab 10 × 30, azzurro • PIEDIMONTE cap (14" × 30"), riviera

PO LISHED CA SUAL

Polished Casual



Lounge chair: roche-bobois.com



TRAVERTINA slab & BALI TRAVERTINA cap, ivory • ANTIKA paver, chestnut brown



ABERDEEN slab, rock garden brown

Divide, Contrast & Conquer

Define outdoor spaces through the use of high-contrast bandings and elevations. Pictured here, Travertina slab & Bali Travertina pool coping in Ivory offer a blend of cream tones to achieve a soft colour palette with subtle texture. Deep coloured Antika paver cobblestones in Chocolate Brown are then used to frame the pool with a bold statement banding. The open space is then enclosed by the Mini-Creta Architectural wall & pillar collection's natural rugged stone face and clean lines in creamy Harvest Gold colour. The walls & pillars bring a sense of intimacy to the expansive setting; hemming in the large open space and encouraging casual playfulness with a stone fire pit also made from Mini-Creta Architectural.



↑ FIRE PIT: MINI-CRETA Architectural wall, chestnut brown • PORTOFINO cap, rock garden brown



↑ TRAVERTINA slab, ivory • ANTIKA paver, chestnut brown



↑ MINI-CRETA ARCHITECTURAL wall, chestnut brown

Refer to the **POLISHED CASUAL Style Lab** on the next page for more ideas. →

Polished Casual



MAKE IT YOURS



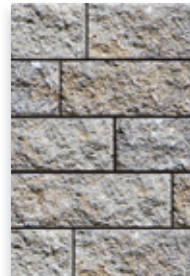
ACCESSORIES



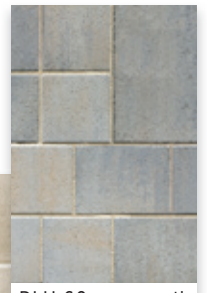
VALENCIA fire pit



TEXTURES



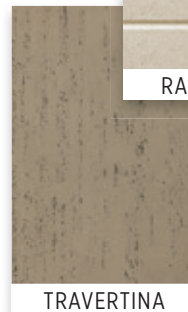
MINI-CRETA



BLU 60mm smooth



RAFFINATO



TRAVERTINA



ANTIKA



MOSAĪKS



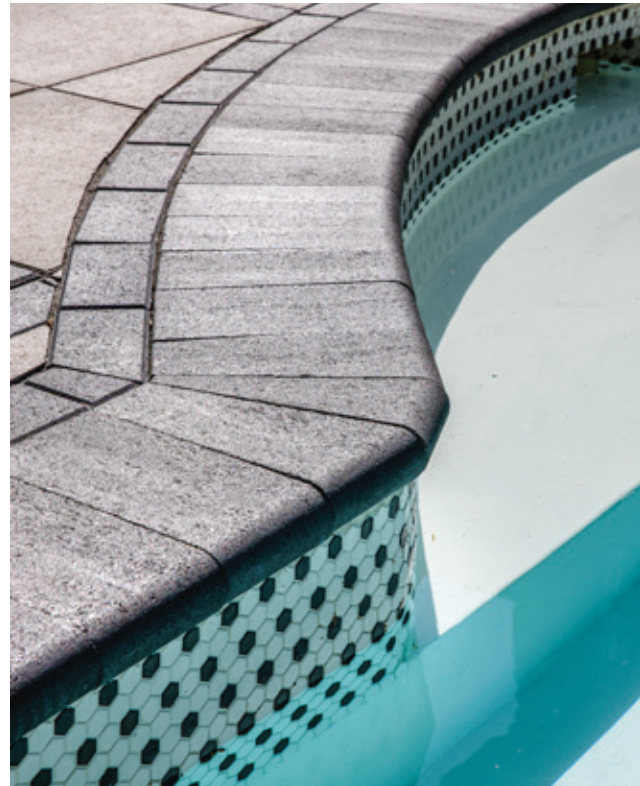
- A** BOREALIS slab, hazelnut brandy • ANTIKA paver, chestnut brown
- B** TRAVERTINA 20 × 30 slab, ivory • BOREALIS 5 × 30 slab, hazelnut brandy
- C** PRIMA cap, chestnut brown • RAFFINATO 90mm wall, greyed nickel • MINI-CRETA wall 3" & 6", chestnut brown
- D** INDUSTRIA 300 × 600 smooth paver, greyed nickel • SAN MARINO paver small rectangles, chestnut brown
- E** BLU 60 mm slate slab, shale grey • BOREALIS 5 × 30 slab, hazelnut brandy

Euro
Flair

EURO RO FLAIR



Armchair: roche-bobois.com



↑ BULLNOSE cap, onyx black



↑ BLU GRANDE polished, greyed nickel

High-Impact, High-Contrast Design

Euro flair is all about achieving high-impact design through the collision of Old World architecture and avant-garde elements. The Tux outdoor slab collection reinvents the vintage sophistication of Europe's classic black and white tiling by bringing the trend to gallerias and outdoor terraces. The checkerboard mix of the Tux collection in Greyed Nickel and Onyx Black presents an intricate geometric floor pattern that becomes an ideal backdrop for modern black and white decorative accents.



↑ TUX slab, onyx black & greyed nickel



↑ INDUSTRIA slab, greyed nickel • VICTORIEN 60 mm paver, onyx black, BULLNOSE cap, onyx black

Refer to the **EURO FLAIR Style Lab** on the next page for more ideas. →

Euro Flair



MAKE IT YOURS



ACCESSORIES



Bar stool: roche-bobois.com

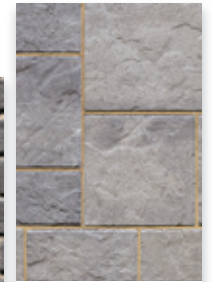
TEXTURES



ANTIKA



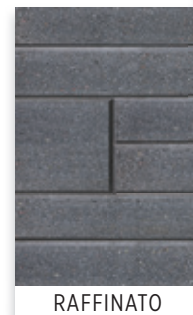
VILLAGIO



BLU GRANDE



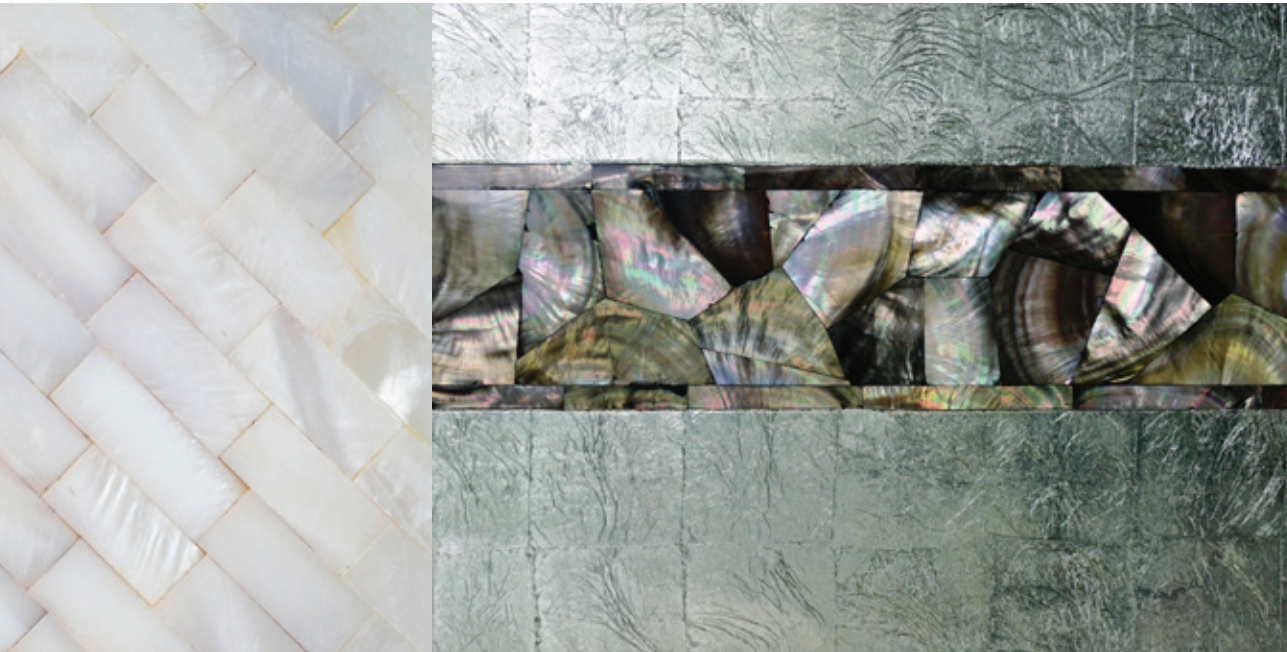
TUX



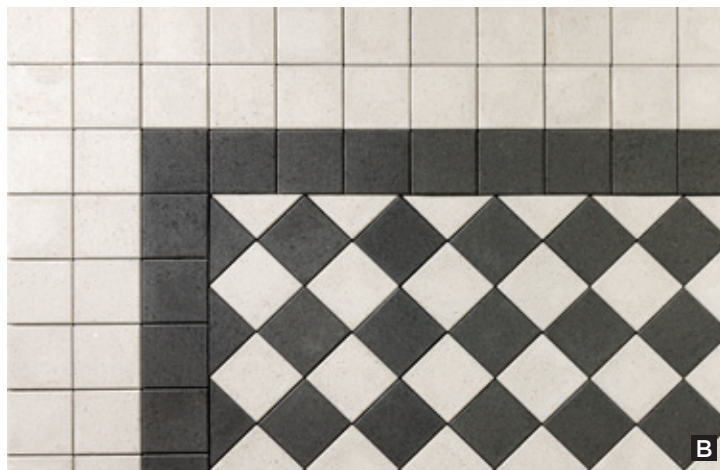
RAFFINATO



RAFFINATO pizza oven



MOSAÏKS



A BLU 60 mm smooth slab (6" × 13"), greyed nickel and onyx black
 • INDUSTRIA 600 slab, greyed nickel and onyx black

B TUX slab, greyed nickel and onyx black

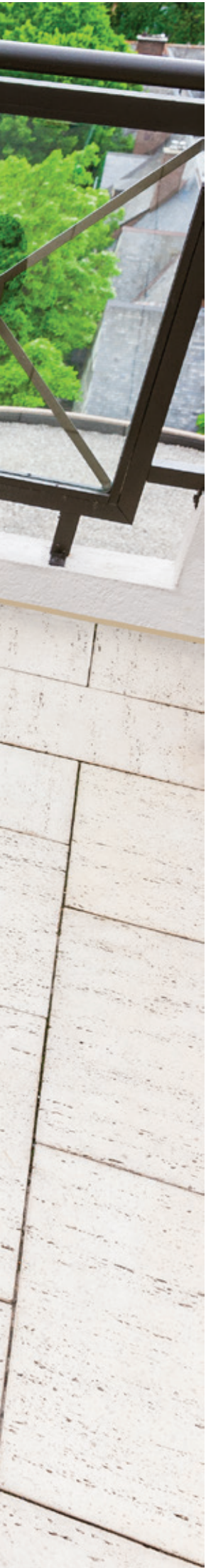
C VILLAGIO paver, shale grey and onyx black • BLU GRANDE smooth slab, shale grey

D BALTIMORE 180 mm wall, shale grey, brushed pewter • RAFFINATO 180 mm corner smooth, greyed nickel • RAFFINATO cap, onyx black

E VICTORIEN and ANTIKA pavers, onyx black



TRAVERTINA IVORY



SLABS

MAKE A BIG IMPRESSION.

The slab collection holds some of Techo-Bloc's most eye-catching stone designs. Crafted using ingredients such as granite and other fine quality aggregates, the slab collection achieves the beauty of natural stone while maintaining the durability of traditional concrete slabs. Its natural beauty is captured by the diversity of its details from varying colour blends, to different surface textures. Designed for light pedestrian traffic only, not suitable for vehicle traffic.



ABERDEEN

SLAB COLLECTION

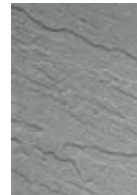


ROCK GARDEN BROWN

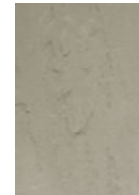


ROCK GARDEN BROWN

TONE
DISTRIBUTION
HIGH



AZZURRO



OLIVE



ROCK GARDEN BROWN



BAJA BEIGE

ABERDEEN 20" × 10" • 20" × 20"



	(H × D × L)	
A	57 × 508 × 254 mm	2 1/4 × 20 × 10 in
B	57 × 508 × 508 mm	2 1/4 × 20 × 20 in
	6.58 m ² /pal	70.83 ft ² /pal

ABERDEEN 30" × 10"



(H × D × L)	
57 × 762 × 254 mm	2 1/4 × 30 × 10 in
3.29 m ² /pal	35.42 ft ² /pal

ABERDEEN 30" × 20"



(H × D × L)	
57 × 762 × 508 mm	2 1/4 × 30 × 20 in
6.58 m ² /pal	70.83 ft ² /pal

ABERDEEN 30" × 30"



(H × D × L)	
57 × 762 × 762 mm	2 1/4 × 30 × 30 in
9.87 m ² /pal	106.25 ft ² /pal

Stonedge
COLLECTION



For an authentic look, each colour option is composed of a variety of darker & lighter tones. Natural ingredients such as granite are present within the recipe to allow for a range in tones, veining and textures from one stone to another. Colour samples for reference only. Actual product colours may vary.

BLU 60 MM

SLATE COLLECTION



CHAMPLAIN GREY - FURNITURE: AVENCY.CA



CHAMPLAIN GREY



slate

1-2-3
SHALE GREY

1-2-3
CHAMPLAIN GREY

1-2-3
SANDLEWOOD

1-2-3
MOJAVE BEIGE

1-2-3
CHESTNUT BROWN

1-2-3
HARVEST GOLD

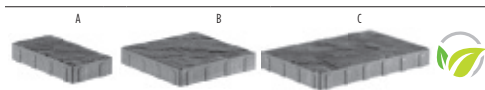
1-2
AUTUMN RED

2
CHOCOLATE BROWN*

2
ONYX BLACK*

*Chocolate brown & onyx black only available in half-pallets.

¹ BLU 60 MM



(H × D × L)

A	60 × 330 × 165 mm	2 3/8 × 13 × 6 1/2 in
B	60 × 330 × 330 mm	2 3/8 × 13 × 13 in
C	60 × 330 × 495 mm	2 3/8 × 13 × 19 1/2 in
	10.96 m ² /pal	116.82 ft ² /pal

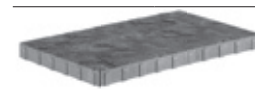
² BLU 60 MM (6" × 13")



(H × D × L)

60 × 330 × 165 mm	2 3/8 × 13 × 6 1/2 in
10.78 m ² /pal	116.05 ft ² /pal
*5.88 m ² /half pal	*63.30 ft ² /half pal

³ BLU GRANDE



(H × D × L)

60 × 495 × 825 mm	2 3/8 × 19 1/2 × 32 1/2 in
8.98 m ² /pal	96.71 ft ² /pal







BLU 60 MM

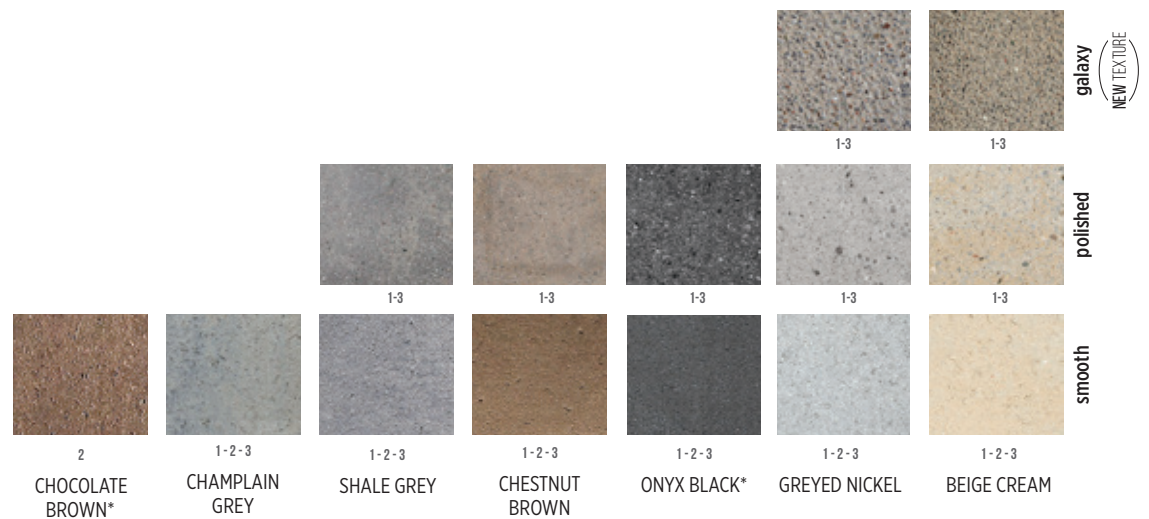
GALAXY, POLISHED & SMOOTH SLAB COLLECTION



BLU GRANDE POLISHED GREYED NICKEL - FURNITURE: ROCHE-BOBOIS.COM



BLU GRANDE POLISHED GREYED NICKEL



¹BLU 60 MM

	A	B	C
(H × D × L)			
A	60 × 330 × 165 mm	2 3/8 × 13 × 6 1/2 in	
B	60 × 330 × 330 mm	2 3/8 × 13 × 13 in	
C	60 × 330 × 495 mm	2 3/8 × 13 × 19 1/2 in	
	10.96 m ² /pal	116.82 ft ² /pal	

²BLU 60 MM (6" × 13")

(H × D × L)	
	60 × 330 × 165 mm 2 3/8 × 13 × 6 1/2 in
	10.78 m ² /pal 116.05 ft ² /pal
	*5.88 m ² /half pal *63.30 ft ² /half pal

³BLU GRANDE

(H × D × L)	
	60 × 495 × 825 mm 2 3/8 × 19 1/2 × 32 1/2 in
	8.98 m ² /pal 96.71 ft ² /pal



* (6" × 13") smooth in chocolate brown and onyx black are only available in half-pallets.

For an authentic look, each colour option is composed of a variety of darker & lighter tones. Natural ingredients such as granite are present within the recipe to allow for a range in tones, veining and textures from one stone to another. Colour samples for reference only. Actual product colours may vary.

BOREALIS

SLAB COLLECTION



SAUVIGNON OAK

HAZELNUT BRANDY

SMOKED PINE

■ ■ ■ TONE
■ ■ ■ DISTRIBUTION
■ ■ ■ HIGH

BOREALIS SLAB 5"×30"



(H × D × L)

57 × 127 × 762 mm 2 1/4 × 5 × 30 in

6.58 m²/pal 70.83 ft²/pal

68 units/pal

BOREALIS SLAB 10"×30"



(H × D × L)

57 × 254 × 762 mm 2 1/4 × 10 × 30 in

6.58 m²/pal 70.83 ft²/pal

34 units/pal

Stonedge
COLLECTION





INCA

SLAB



BAJA BEIGE - FURNITURE: AVENCY.CA



BAJA BEIGE

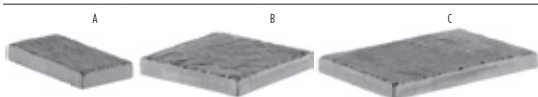
CORAL SANDS

VICTORIA

RIVIERA

TONE
DISTRIBUTION
MEDIUM

INCA



(H × D × L)

- A 51 × 381 × 191 mm 2 × 15 × 7½ in
 - B 51 × 381 × 381 mm 2 × 15 × 15 in
 - C 51 × 381 × 572 mm 2 × 15 × 22½ in
- 6.18 m²/pal 66.5 ft²/pal

Stonedge
COLLECTION



INDUSTRIA

SLAB

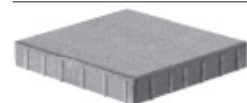


SMOOTH GREYED NICKEL

ON ORDER						granitex smooth polished
ONYX BLACK, GREYED NICKEL AND BEIGE CREAM IN STOCK						
ON ORDER						
	GREY	CHARCOAL	ONYX BLACK	GREYED NICKEL	BEIGE CREAM	

A minimum pre-order of 2500 ft² is required for on order items.

INDUSTRIA 600 SERIES



(H x D x L)
 60 x 600 x 600 mm 2³/₈ x 23⁵/₈ x 23⁵/₈ in
 5.04 m² /pal 54.25 ft² /pal



For an authentic look, each colour option is composed of a variety of darker & lighter tones. Natural ingredients such as granite are present within the recipe to allow for a range in tones, veining and textures from one stone to another. Colour samples for reference only. Actual product colours may vary.

MAYA

SLAB



VICTORIA



RIVIERA



BAJA BEIGE

■ ■ ■ TONE
■ ■ ■ DISTRIBUTION
■ ■ ■ MEDIUM

MAYA SLAB



(H × D × L)
A - F 57 × 584 × 788 mm 2 1/4 × 23 × 31 in
7.82 m²/pal 84.15 ft²/pal
17 units/pal

Stonedge
COLLECTION



MONTICELLO

SLAB COLLECTION



CHOCOLATE BROWN, AZZURRO, OLIVE - FURNITURE: AGENCY.CA

TONE ■■■
 DISTRIBUTION ■■■
 HIGH ■■■



OLIVE



ROCK GARDEN BROWN



CHOCOLATE BROWN



AZZURRO

MONTICELLO 20" × 10" • 20" × 20"



	(H × D × L)	
A	57 × 508 × 254 mm	2 1/4 × 20 × 10 in
B	57 × 508 × 508 mm	2 1/4 × 20 × 20 in
	6.58 m ² /pal	70.83 ft ² /pal

MONTICELLO 20" × 30"



(H × D × L)	
57 × 508 × 762 mm	2 1/4 × 20 × 30 in
6.58 m ² /pal	70.83 ft ² /pal

Stonedge
COLLECTION



For an authentic look, each colour option is composed of a variety of darker & lighter tones. Natural ingredients such as granite are present within the recipe to allow for a range in tones, veining and textures from one stone to another. Colour samples for reference only. Actual product colours may vary.

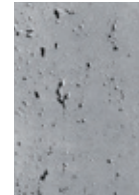


TRAVERTINA

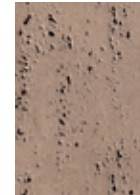
SLAB COLLECTION



TONE
 DISTRIBUTION
HIGH



RIVIERA

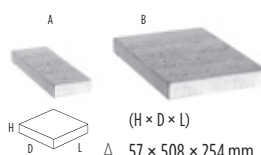


ROCK GARDEN
BROWN



IVORY

TRAVERTINA 20" × 10" • 20" × 20"



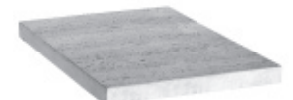
(H × D × L)
 A 57 × 508 × 254 mm 2 1/4 × 20 × 10 in
 B 57 × 508 × 508 mm 2 1/4 × 20 × 20 in
 6.59 m²/pal 70.89 ft²/pal

TRAVERTINA 20" × 30"



(H × D × L)
 57 × 508 × 762 mm 2 1/4 × 20 × 30 in
 6.59 m²/pal 70.89 ft²/pal

TRAVERTINA 30" × 30"



(H × D × L)
 57 × 762 × 762 mm 2 1/4 × 30 × 30 in
 9.87 m²/pal 106.25 ft²/pal

Stonedge
COLLECTION



For an authentic look, each colour option is composed of a variety of darker & lighter tones. Natural ingredients such as granite are present within the recipe to allow for a range in tones, veining and textures from one stone to another. Colour samples for reference only. Actual product colours may vary.

PARA

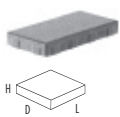
SLAB COLLECTION



GREYED NICKEL



PARA 500 × 250 SMOOTH & POLISHED



(H × D × L)
60 × 500 × 250 mm 2 3/8 × 19 11/16 × 9 3/8 in
11 m²/pal 118.40 ft²/pal

PARA 500 × 500 SMOOTH & POLISHED



(H × D × L)
60 × 500 × 500 mm 2 3/8 × 19 11/16 × 9 11/16 in
11 m²/pal 118.40 ft²/pal

PARA 500 × 750 SMOOTH & POLISHED



(H × D × L)
60 × 500 × 750 mm 2 3/8 × 19 11/16 × 29 1/2 in
8,25 m²/pal 88.40 ft²/pal

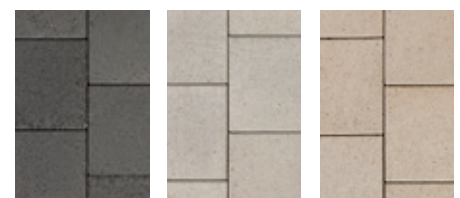


TUX

SLAB COLLECTION



TUX 12" × 12" GREYED NICKEL, ONYX BLACK



ONYX BLACK

GREYED NICKEL

BEIGE CREAM

TUX 12" × 12"



(H × D × L)
 60 × 300 × 300 mm 2³/₈ × 11¹³/₁₆ × 11¹³/₁₆ in
 11.88 m²/pal 127.88 ft²/pal
 132 units/pal

TUX 12" × 24"



(H × D × L)
 60 × 300 × 600 mm 2³/₈ × 11¹³/₁₆ × 23⁵/₈ in
 10.80 m²/pal 116.25 ft²/pal
 60 units/pal



For an authentic look, each colour option is composed of a variety of darker & lighter tones. Natural ingredients such as granite are present within the recipe to allow for a range in tones, veining and textures from one stone to another. Colour samples for reference only. Actual product colours may vary.



INDUSTRIA PAVER GREYED NICKEL



PAVERS

THE POWER OF INTERLOCKING.

All Techo-Bloc pavers are interlocking, designed to withstand vehicle traffic, salt-resistant and backed by a lifetime transferable warranty. They contain colour all the way through to allow for a natural-wear that won't have colour fade over time. It is our long-standing mission to maintain our position as world leaders for quality in the manufacture of landscape pavers.

ANTIKA

PAVER



SHALE GREY - FURNITURE BY: AVENCY.CA



SHALE GREY



ONYX BLACK



CHOCOLATE BROWN



CHESTNUT BROWN



SANDLEWOOD



SHALE GREY

ANTIKA



(H × D × L)

Various sizes, height of 60 mm 2 3/8 in

8.10 m²/pal

87 ft²/pal





BLU 80 MM

SLATE PAVER COLLECTION



CHESTNUT BROWN



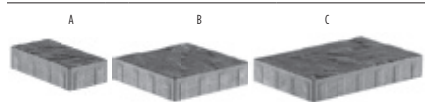
SANDLEWOOD



1-2 1-2 1-2 1-2 1-2 1-2 1 2 2

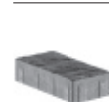
SHALE GREY CHAMPLAIN GREY SANDLEWOOD MOJAVE BEIGE CHESTNUT BROWN HARVEST GOLD AUTUMN RED CHOCOLATE BROWN ONYX BLACK

¹ BLU 80 MM



	(H × D × L)	
A	80 × 330 × 165 mm	3 1/8" × 13 × 6 1/2 in
B	80 × 330 × 330 mm	3 1/8" × 13 × 13 in
C	80 × 330 × 495 mm	3 1/8" × 13 × 19 1/2 in
	7.90 m ² /pal	84.96 ft ² /pal

² BLU 80 MM (6" × 13")



	(H × D × L)	
	80 × 330 × 165 mm	3 1/8" × 13 × 6 1/2 in
	7.84 m ² /pal	84.40 ft ² /pal





CHESTNUT BROWN



SMOOTH SHALE GREY

BLU 80 MM

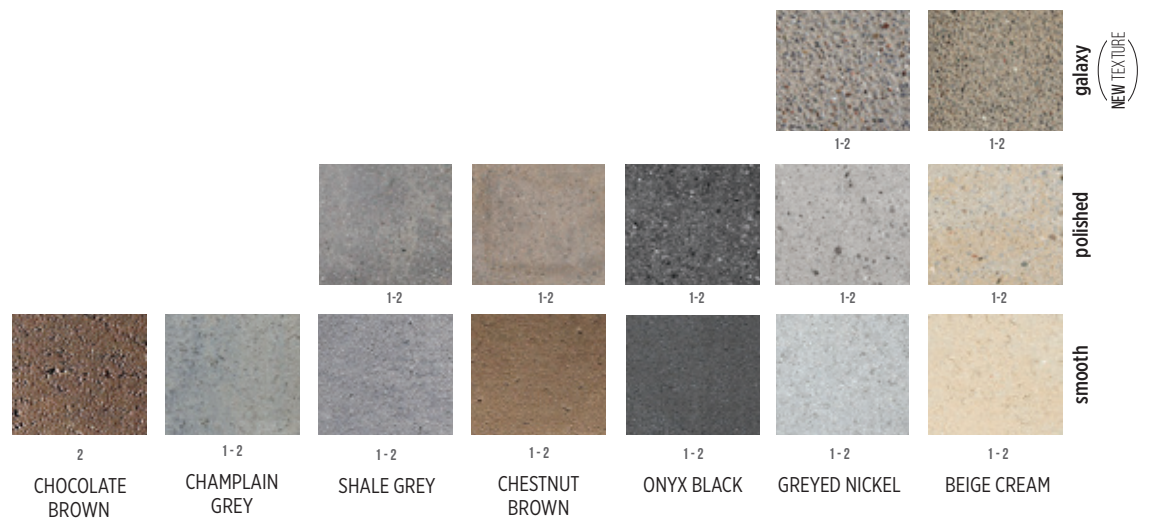
GALAXY, POLISHED & SMOOTH PAVER COLLECTION



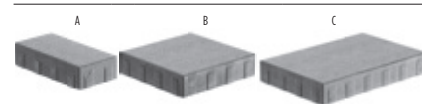
SMOOTH SHALE GREY



SMOOTH SHALE GREY



¹BLU 80 MM



	(H × D × L)	
A	80 × 330 × 165 mm	3 1/8 × 13 × 6 1/2 in
B	80 × 330 × 330 mm	3 1/8 × 13 × 13 in
C	80 × 330 × 495 mm	3 1/8 × 13 × 19 1/2 in
	7.90 m ² /pal	84.96 ft ² /pal

²BLU 80 MM (6" × 13")



(H × D × L)	
80 × 330 × 165 mm	3 1/8 × 13 × 6 1/2 in
7.84 m ² /pal	84.40 ft ² /pal



For an authentic look, each colour option is composed of a variety of darker & lighter tones. Natural ingredients such as granite are present within the recipe to allow for a range in tones, veining and textures from one stone to another. Colour samples for reference only. Actual product colours may vary.

EVA

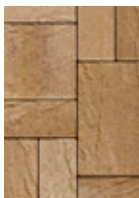
PAVER



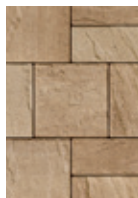
SANDLEWOOD - FURNITURE - GARDENCOTTAGE.COM



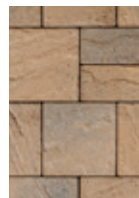
MOJAVE BEIGE



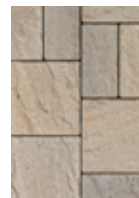
HARVEST GOLD



CHESTNUT BROWN



SANDLEWOOD



CHAMPLAIN GREY



SHALE GREY

EVA

	A	B	C
	(H × D × L)		
	A 60 × 223 × 112 mm	2 3/8 × 8 3/4 × 4 3/8 in	
	B 60 × 223 × 223 mm	2 3/8 × 8 3/4 × 8 3/4 in	
	C 60 × 223 × 335 mm	2 3/8 × 8 3/4 × 13 3/16 in	
	12.31 m ² /pal	132.48 ft ² /pal	



FLAGSTONE

PAVER



CHAMPLAIN GREY



CHAMPLAIN
GREY



SANDLEWOOD



CHESTNUT
BROWN

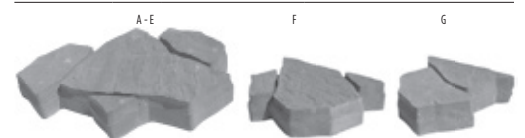


HARVEST GOLD



MOJAVE BEIGE

FLAGSTONE



(H × D × L)

A - E	80 × 411 × 602 mm	3 1/8 × 16 3/16 × 23 11/16 in
F	80 × 411 × 301 mm	3 1/8 × 16 3/16 × 11 7/8 in
G	80 × 354 × 301 mm	3 1/8 × 13 15/16 × 11 7/8 in
	7.58 m ² /pal	81.60 ft ² /pal



For an authentic look, each colour option is composed of a variety of darker & lighter tones. Natural ingredients such as granite are present within the recipe to allow for a range in tones, veining and textures from one stone to another. Colour samples for reference only. Actual product colours may vary.



SMOOTH 600 × 100 GREYED NICKEL

INDUSTRIA

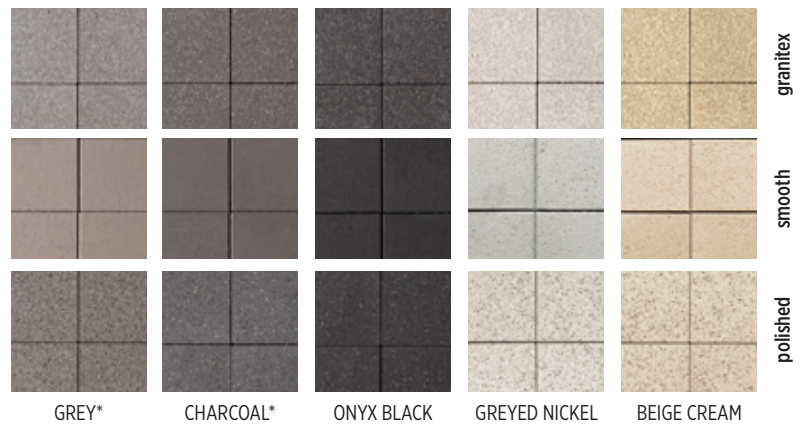
POLISHED, SMOOTH & GRANITEX PAVER COLLECTION



SMOOTH 600×100 & 600×600 GREYED NICKEL



SMOOTH 600 × 100 GREYED NICKEL



A minimum pre-order of 2500 ft² is required on on order items.

200 SERIES: PRE-ORDER ONLY - MIN. 1000 FT²



(H × D × L)

100 × 200 × 200 mm $3 \frac{15}{16} \times 7 \frac{7}{8} \times 7 \frac{7}{8}$ in
5.60 m²/pal 60.28 ft²/pal



(H × D × L)

100 × 200 × 400 mm $3 \frac{15}{16} \times 7 \frac{7}{8} \times 15 \frac{3}{4}$ in
5.60 m²/pal 60.28 ft²/pal

300 SERIES: PRE-ORDER ONLY - MIN. 1000 FT²



(H × D × L)

100 × 300 × 100 mm $3 \frac{15}{16} \times 11 \frac{15}{16} \times 3 \frac{15}{16}$ in
4.20 m²/pal 45.21 ft²/pal



(H × D × L)

100 × 300 × 150 mm $3 \frac{15}{16} \times 11 \frac{15}{16} \times 5 \frac{7}{8}$ in
6.62 m²/pal 71.20 ft²/pal



(H × D × L)

100 × 300 × 300 mm $3 \frac{15}{16} \times 11 \frac{15}{16} \times 11 \frac{15}{16}$ in
7.56 m²/pal 81.38 ft²/pal

600 SERIES: PRE-ORDER ONLY - MIN. 1000 FT²



(H × D × L)

100 × 600 × 200 mm $3 \frac{15}{16} \times 23 \frac{5}{8} \times 7 \frac{7}{8}$ in
4.20 m²/pal 45.21 ft²/pal



(H × D × L)

100 × 600 × 600 mm $3 \frac{15}{16} \times 23 \frac{5}{8} \times 23 \frac{5}{8}$ in
5.04 m²/pal 54.25 ft²/pal

600 SERIES

Exception: greyed nickel and onyx black in smooth are **in stock** items.



(H × D × L)

100 × 600 × 100 mm $3 \frac{15}{16} \times 23 \frac{5}{8} \times 3 \frac{15}{16}$ in
4.20 m²/pal 45.21 ft²/pal



(H × D × L)

100 × 600 × 300 mm $3 \frac{15}{16} \times 23 \frac{5}{8} \times 11 \frac{15}{16}$ in
5.04 m²/pal 54.25 ft²/pal



LINEA

PAVER COLLECTION




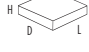


SHALE GREY




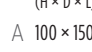


SHALE GREY CHAMPLAIN GREY SANDLEWOOD CHESTNUT BROWN CHOCOLATE BROWN* ONYX BLACK*

LINEA SMALL RECTANGLES

	A	B	C
			
	(H × D × L)		
A	100 × 100 × 225 mm	3 15/16 × 3 15/16 × 8 7/8 in	
B	100 × 100 × 325 mm	3 15/16 × 3 15/16 × 12 15/16 in	
C	100 × 100 × 425 mm	3 15/16 × 3 15/16 × 16 3/4 in	
	7.51 m ² /pal	80.81 ft ² /pal	
	*4.29 m ² /half pal	*46.18 ft ² /half pal	

LINEA LARGE RECTANGLES

	A	B	C
			
	(H × D × L)		
A	100 × 150 × 225 mm	3 15/16 × 5 7/8 × 8 7/8 in	
B	100 × 150 × 325 mm	3 15/16 × 5 7/8 × 12 15/16 in	
C	100 × 150 × 425 mm	3 15/16 × 5 7/8 × 16 3/4 in	
	7.17 m ² /pal	77.14 ft ² /pal	
	*4.10 m ² /half pal	*44.08 ft ² /half pal	

* Onyx black and chocolate brown are only available in half-pallets.



MISTA

PAVER COLLECTION



SHALE GREY



ONYX BLACK
1



CHOCOLATE BROWN
1



AUTUMN RED
2-3



CHESTNUT BROWN
1-2-3



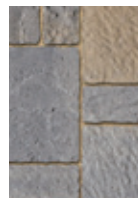
HARVEST GOLD
1-2-3



MOJAVE BEIGE
2-3



SANDLEWOOD
2-3

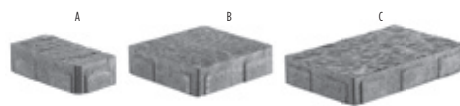


CHAMPLAIN GREY
1-2-3



SHALE GREY
1-2-3

MISTA GRANDE¹



(H × D × L)

A 80 × 300 × 150 mm 3 1/8 × 11 13/16 × 5 7/8 in

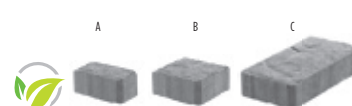
B 80 × 300 × 300 mm 3 1/8 × 11 13/16 × 11 13/16 in

C 80 × 300 × 450 mm 3 1/8 × 11 13/16 × 17 1/4 in

8.65 m²/pal

93.04 ft²/pal

MISTA RANDOM PERMEABLE²



(H × D × L)

A 65 × 200 × 100 mm 2 9/16 × 7 7/8 × 3 15/16 in

B 65 × 200 × 200 mm 2 9/16 × 7 7/8 × 7 7/8 in

C 65 × 200 × 300 mm 2 9/16 × 7 7/8 × 11 13/16 in

10.80 m²/pal

116.20 ft²/pal

MISTA SQUARE³



(H × D × L)

A 65 × 300 × 300 mm 2 9/16 × 11 13/16 × 11 13/16 in

10.80 m²/pal

116.20 ft²/pal



SAN MARINO

PAVER COLLECTION

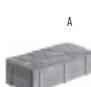


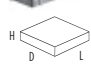


ONYX BLACK




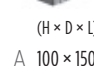


ONYX BLACK* CHOCOLATE BROWN* CHESTNUT BROWN SANDLEWOOD CHAMPLAIN GREY SHALE GREY

SAN MARINO SMALL RECTANGLES

	A	B	C
			
	(H × D × L)		
A	100 × 100 × 225 mm	3 15/16 × 3 15/16 × 8 7/8 in	
B	100 × 100 × 325 mm	3 15/16 × 3 15/16 × 12 15/16 in	
C	100 × 100 × 425 mm	3 15/16 × 3 15/16 × 16 3/4 in	
	7.51 m ² /pal	80.81 ft ² /pal	
	*4.29 m ² /half pal	*46.18 ft ² /half pal	

SAN MARINO LARGE RECTANGLES

	A	B	C
			
	(H × D × L)		
A	100 × 150 × 225 mm	3 15/16 × 5 7/8 × 8 7/8 in	
B	100 × 150 × 325 mm	3 15/16 × 5 7/8 × 12 15/16 in	
C	100 × 150 × 425 mm	3 15/16 × 5 7/8 × 16 3/4 in	
	7.17 m ² /pal	77.14 ft ² /pal	
	*4.10 m ² /half pal	*44.08 ft ² /half pal	

* Onyx black and chocolate brown are only available in half-pallets.



VICTORIEN

PAVER COLLECTION



MOJAVE BEIGE



GREY

SHALE GREY

SANDLEWOOD

MOJAVE BEIGE

RED & BLACK

CHOCOLATE BROWN

ONYX BLACK



VICTORIEN 60 MM



(H × D × L)
 60 × 108 × 216 mm 2 3/8 × 4 1/4 × 8 1/2 in
 11.50 m²/pal 123.70 ft²/pal

For an authentic look, each colour option is composed of a variety of darker & lighter tones. Natural ingredients such as granite are present within the recipe to allow for a range in tones, veining and textures from one stone to another. Colour samples for reference only. Actual product colours may vary.



VILLAGIO

PAVER



ONYX BLACK



SHALE GREY - ONYX BLACK



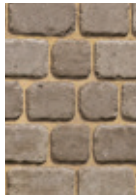
ONYX BLACK*



CHOCOLATE BROWN*



HARVEST GOLD



CHESTNUT BROWN



MOJAVE BEIGE



SANDLEWOOD



CHAMPLAIN GREY



SHALE GREY



VILLAGIO



	(H × D × L)	
A	60 × 130 × 130 mm	2 3/8 × 5 1/8 × 5 1/8 in
B	60 × 130 × 160 mm	2 3/8 × 5 1/8 × 6 5/16 in
C	60 × 130 × 185 mm	2 3/8 × 5 1/8 × 7 5/16 in
D	60 × 130 × 215 mm	2 3/8 × 5 1/8 × 8 7/16 in
	10.88 m ² /pal	117 ft ² /pal
	*4.94 m ² /half pal	*53.18 ft ² /half pal

* Onyx black and chocolate brown are only available in half-pallets.

LEGACY COLLECTION



SANDLEWOOD

ALLEGRO

PAVER



SHALE GREY

CHAMPLAIN
GREY

SANDLEWOOD

MOJAVE BEIGE

CHESTNUT
BROWN

HARVEST GOLD

AUTUMN RED

ALLEGRO



(H × D × L)

A	60 × 135 × 119 mm	2 ³ / ₈ × 5 ¹ / ₁₆ × 4 ¹¹ / ₁₆ in
B	60 × 135 × 170 mm	2 ³ / ₈ × 5 ¹ / ₁₆ × 6 ¹¹ / ₁₆ in
C	60 × 135 × 198 mm	2 ³ / ₈ × 5 ¹ / ₁₆ × 7 ¹⁵ / ₁₆ in
D	60 × 135 × 238 mm	2 ³ / ₈ × 5 ¹ / ₁₆ × 9 ³ / ₈ in
	12.06 m ² /pal	129.80 ft ² /pal



CHESTNUT BROWN

PARISIEN

PAVER



CHAMPLAIN GREY

SHALE GREY

SANDLEWOOD

CHESTNUT BROWN

CHOCOLATE BROWN*

ONYX BLACK*

* Onyx black & chocolate brown are only available for Parisien Rectangle.

PARISIEN CIRCLE



(H × D × L)

Various sizes, height of 60 mm

Circle diameter 2.41 m

4.70 m²/pal

2 3/8

7' 11"

50.70 ft²/pal

PARISIEN SQUARE



(H × D × L)

60 × 158 × 158 mm

11.54 m²/pal

2 3/8 × 6 1/4 × 6 1/4 in

124.20 ft²/pal

PARISIEN RECTANGLE



60 × 158 × 238 mm

12.47 m²/pal

2 3/8 × 6 1/4 × 9 3/8 in

134.20 ft²/pal



VILLAGIO SHALE GREY



PERMEABLE PAVERS

BE ECO-CONSCIOUS.

Techo-Bloc offers various eco-conscious and cost-effective pavements for residential and commercial stormwater management. These permeable pavements were designed to allow for the proper percolation of surface water into the ground; reducing the risk and severity of flooding, eliminating puddles, speeding up the melting process of snow, reducing winter ice hazards and cost-savings on de-icing salt and snow removal. Many municipalities encourage the use of permeable pavements by offering tax incentives and utility fee reductions. Check with your local government to see if they offer and local incentives for permeable pavements.

ANTIKA

PAVER



SHALE GREY



ONYX BLACK



CHOCOLATE BROWN



CHESTNUT BROWN



SANDLEWOOD



SHALE GREY

ANTIKA



(H × D × L)

Various sizes, height of 60 mm 2 3/8 in

8.10 m²/pal

87 ft²/pal



BLU 60 & 80 MM

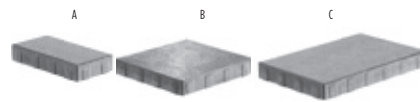
GALAXY, POLISHED, SLATE & SMOOTH



CHESTNUT BROWN

FOR COLOUR AVAILABILITY SEE PAGES 30 TO 33

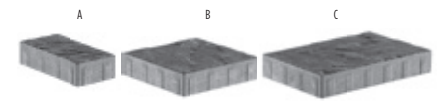
BLU 60 MM



	(H × D × L)	
A	60 × 330 × 165 mm	2 3/8 × 13 × 6 1/2 in
B	60 × 330 × 330 mm	2 3/8 × 13 × 13 in
C	60 × 330 × 495 mm	2 3/8 × 13 × 19 1/2 in
	10.96 m ² /pal	116.82 ft ² /pal

FOR COLOUR AVAILABILITY SEE PAGES 48 TO 51

BLU 80 MM



	(H × D × L)	
A	80 × 330 × 165 mm	3 1/8 × 13 × 6 1/2 in
B	80 × 330 × 330 mm	3 1/8 × 13 × 13 in
C	80 × 330 × 495 mm	3 1/8 × 13 × 19 1/2 in
	7.90 m ² /pal	84.96 ft ² /pal



MISTA RANDOM

PAVER



MOJAVE BEIGE



AUTUMN RED



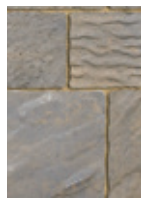
CHESTNUT BROWN



HARVEST GOLD



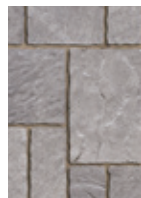
MOJAVE BEIGE



SANDLEWOOD

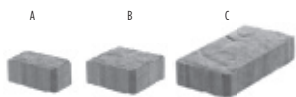


CHAMPLAIN GREY



SHALE GREY

MISTA RANDOM PERMEABLE



(H × D × L)

A	65 × 200 × 100 mm	2 9/16 × 7 7/8 × 3 15/16 in
B	65 × 200 × 200 mm	2 9/16 × 7 7/8 × 7 7/8 in
C	65 × 200 × 300 mm	2 9/16 × 7 7/8 × 11 13/16 in
	10.80 m ² /pal	116.20 ft ² /pal



VICTORIEN 60 MM

PERMEABLE PAVER



CHESTNUT BROWN



SHALE GREY



CHESTNUT BROWN

VICTORIEN 60 MM PERMEABLE



(H × D × L)
 60 × 108 × 216 mm 2 3/8 × 4 1/4 × 8 1/2 in
 10.24 m²/pal 110.22 ft²/pal



For an authentic look, each colour option is composed of a variety of darker & lighter tones. Natural ingredients such as granite are present within the recipe to allow for a range in tones, veining and textures from one stone to another. Colour samples for reference only. Actual product colours may vary.

PURE

PERMEABLE PAVER



SANDLEWOOD



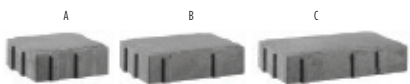
CHESTNUT BROWN

SANDLEWOOD

CHAMPLAIN GREY

SHALE GREY

PURE



(H × D × L)

A	80 × 229 × 229 mm	3 1/8 × 9 × 9 in
B	80 × 229 × 305 mm	3 1/8 × 9 × 12 in
C	80 × 229 × 381 mm	3 1/8 × 9 × 15 in
	8.36 m ² /pal	90 ft ² /pal



VILLAGIO

PERMEABLE PAVER



SHALE GREY - FURNITURE : AGENCY.CA



ONYX BLACK*



CHOCOLATE BROWN*



HARVEST GOLD



CHESTNUT BROWN



MOJAVE BEIGE



SANDLEWOOD



CHAMPLAIN GREY



SHALE GREY

VILLAGIO



	(H × D × L)	
A	60 × 130 × 130 mm	2 3/8 × 5 1/8 × 5 1/8 in
B	60 × 130 × 160 mm	2 3/8 × 5 1/8 × 6 5/16 in
C	60 × 130 × 185 mm	2 3/8 × 5 1/8 × 7 5/16 in
D	60 × 130 × 215 mm	2 3/8 × 5 1/8 × 8 7/16 in
	10.88 m ² /pal	117 ft ² /pal
	*4.94 m ² /half pal	*53.18 pi ² /half pal

* Onyx black & chocolate brown are only available in half-pallets



For an authentic look, each colour option is composed of a variety of darker & lighter tones. Natural ingredients such as granite are present within the recipe to allow for a range in tones, veining and textures from one stone to another. Colour samples for reference only. Actual product colours may vary.



GRAPHIX WALL GREYED NICKEL - FURNITURE: ROCHE-BOBOIS.COM



WALLS

ELEVATE YOUR DESIGN.

Designing your outdoor landscape goes beyond cladding the ground with something beautiful; it's about creating depth of field and dimension with the use of vertical elements. Wall systems are used to build and frame raised patios and stairways, construct stately pillars, support garden beds and act as a retention system against land erosion.

Techo-Bloc's wall system colours have been coordinated to match our collection of slabs and paving stones; ensuring your outdoor design is well balanced and aesthetically pleasing.

BALTIMORE

WALL COLLECTION DOUBLE-SIDED



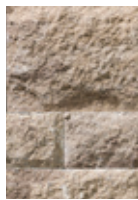
SHALE GREY - FURNITURE : AGENCY.CA



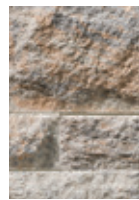
BRAZILIAN SAND



SANDEWOOD
NEW COLOUR



CHESTNUT
BROWN

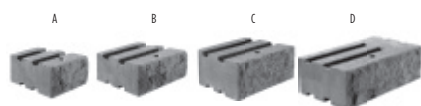


CHAMPLAIN
GREY



SHALE GREY
NEW COLOUR
FORMERLY
BRUSHED PEWTER

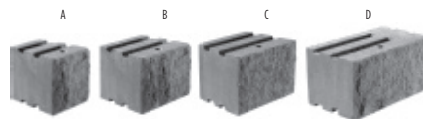
BALTIMORE 90 MM



(H × D × L1 × L2)

	A	B	C	D
A	90 × 270 × 230 × 190 mm	3 9/16 × 10 5/8 × 9 1/16 × 7 1/2 in		
B	90 × 270 × 310 × 270 mm	3 9/16 × 10 5/8 × 12 3/16 × 10 5/8 in		
C	90 × 270 × 270 × 270 mm	3 9/16 × 10 5/8 × 10 5/8 × 10 5/8 in		
D	90 × 270 × 375 × 355 mm	3 9/16 × 10 5/8 × 14 3/4 × 14 in		
	1.95 m ² /pal	21.04 ft ² /pal		

BALTIMORE 180 MM



(H × D × L1 × L2)

	A	B	C	D
A	180 × 270 × 230 × 190 mm	7 1/16 × 10 5/8 × 9 1/16 × 7 1/2 in		
B	180 × 270 × 310 × 270 mm	7 1/16 × 10 5/8 × 12 3/16 × 10 5/8 in		
C	180 × 270 × 270 × 270 mm	7 1/16 × 10 5/8 × 10 5/8 × 10 5/8 in		
D	180 × 270 × 375 × 355 mm	7 1/16 × 10 5/8 × 14 3/4 × 14 in		
	1.95 m ² /pal	21.04 ft ² /pal		



BOREALIS

WALL & EDGE DOUBLE-SIDED



HAZELNUT BRANDY

TONE
DISTRIBUTION
HIGH



SMOKED PINE



HAZELNUT
BRANDY



SAUVIGNON OAK

BOREALIS WALL & EDGE



(H × D × L)

152 × 203 × 1 219 mm 6 × 8 × 48 in

2.97 m²/pal

32 ft²/pal

16 units/pal

Stonedge
COLLECTION

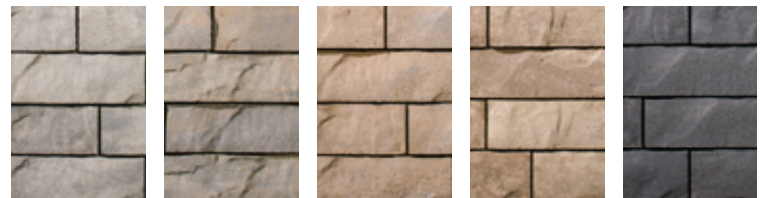


For an authentic look, each colour option is composed of a variety of darker & lighter tones. Natural ingredients such as granite are present within the recipe to allow for a range in tones, veining and textures from one stone to another. Colour samples for reference only. Actual product colours may vary.



NEW BRANDON

WALL COLLECTION DOUBLE-SIDED



SHALE GREY CHAMPLAIN GREY SANDLEWOOD CHESTNUT BROWN ONYX BLACK

BRANDON 90 MM



	(H × D × L1 × L2)	
A	90 × 250 × 285 × 245 mm	3 9/16 × 9 13/16 × 11 1/4 × 9 5/8 in
B	90 × 250 × 365 × 325 mm	3 9/16 × 9 13/16 × 14 3/8 × 12 13/16 in
C	90 × 250 × 405 × 365 mm	3 9/16 × 9 13/16 × 15 15/16 × 14 3/8 in
	1.90 m ² /pal	20.44 ft ² /pal

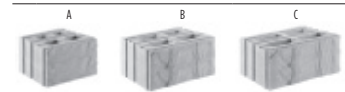
BRANDON 90 MM CORNER & PILLARS

Pillar height 900 mm/35 7/16 in



	(H × D × L)	
	90 × 250 × 360 mm	3 9/16 × 9 13/16 × 14 3/8 in
	40 units/pal	

BRANDON 180 MM



	(H × D × L1 × L2)	
A	180 × 250 × 285 × 245 mm	7 1/16 × 9 13/16 × 11 1/4 × 9 5/8 in
B	180 × 250 × 365 × 325 mm	7 1/16 × 9 13/16 × 14 3/8 × 12 13/16 in
C	180 × 250 × 405 × 365 mm	7 1/16 × 9 13/16 × 15 15/16 × 14 3/8 in
	1.90 m ² /pal	20.44 ft ² /pal

BRANDON 180 MM CORNER & PILLARS

Pillar height 900 mm/35 7/16 in



	(H × D × L)	
	180 × 250 × 360 mm	7 1/16 × 9 13/16 × 14 3/8 in
	20 units/pal	



For an authentic look, each colour option is composed of a variety of darker & lighter tones. Natural ingredients such as granite are present within the recipe to allow for a range in tones, veining and textures from one stone to another. Colour samples for reference only. Actual product colours may vary.

ESCALA

WALL DOUBLE-SIDED

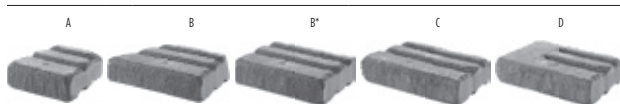


SANDLEWOOD



SANDLEWOOD MOJAVE BEIGE HARVEST GOLD CHESTNUT BROWN SHALE GREY CHAMPLAIN GREY

ESCALA 3.5\"/>



	(H × D × L1 × L2)	
A	90 × 250 × 270 × 220 (mm)	3 9/16 × 9 13/16 × 10 5/8 × 8 11/16 (in)
B	90 × 250 × 360 × 310 (mm)	3 9/16 × 9 13/16 × 14 3/16 × 12 3/16 (in)
B*	90 × 250 × 360 × 360 (mm)	3 9/16 × 9 13/16 × 14 3/16 × 14 3/16 (in)
C	90 × 250 × 400 × 350 (mm)	3 9/16 × 9 13/16 × 15 3/4 × 13 3/4 (in)
D	90 × 250 × 400 × 375 (mm)	3 9/16 × 9 13/16 × 15 3/4 × 14 3/4 (in)
	2.57 m ² / pal.	27.65 pi ² / pal.



GRAPHIX

WALL DOUBLE-SIDED



GREYED NICKEL - FURNITURE: ROCHE-BOBOIS.COM

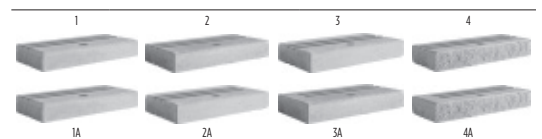


GREYED NICKEL

BEIGE CREAM

ONYX BLACK

GRAPHIX



	(H × D × L)	
1	75 × 230 × 508 mm	2 7/16 × 9 1/16 × 20 in
2	75 × 255 × 508 mm	2 7/16 × 10 1/16 × 20 in
3	75 × 280 × 508 mm	2 7/16 × 11 × 20 in
4	75 × 205 × 508 mm	2 7/16 × 8 1/16 × 20 in
1A	75 × 230 × 508 mm	2 7/16 × 9 1/16 × 20 in
2A	75 × 255 × 508 mm	2 7/16 × 10 1/16 × 20 in
3A	75 × 280 × 508 mm	2 7/16 × 11 × 20 in
4A	75 × 205 × 508 mm	2 7/16 × 8 1/16 × 20 in
	2.44 m ² /pal	26.25 ft ² /pal



For an authentic look, each colour option is composed of a variety of darker & lighter tones. Natural ingredients such as granite are present within the recipe to allow for a range in tones, veining and textures from one stone to another. Colour samples for reference only. Actual product colours may vary.

MANCHESTER

WALL DOUBLE-SIDED



CHESTNUT BROWN



SHALE GREY



CHAMPLAIN GREY



ONYX BLACK*



CHOCOLATE BROWN*



HARVEST GOLD



CHESTNUT BROWN



SANDLEWOOD

MANCHESTER



(H × D × L)
 100 × 200 × 300 mm 3 15/16 × 7 7/8 × 11 15/16 in
 2.70 m²/pal 29.10 ft²/pal
 *1.35 m²/half pal *14.53 ft²/half pal

*Onyx black and chocolate brown are only available in half-pallets.



PRESCOTT

WALL COLLECTION DOUBLE-SIDED



ROCK GARDEN BROWN

TONE
DISTRIBUTION
HIGH



ROCK GARDEN BROWN

CORAL SANDS

VICTORIA

RIVIERA

PRESCOTT 2.25"

	A	B	C
	(H × D × L1 × L2)		
A	57 × 250 × 229 × 189 mm	2 1/4 × 9 9/16 × 9 × 7 7/16 in	
B	57 × 250 × 305 × 265 mm	2 1/4 × 9 9/16 × 12 × 10 7/16 in	
C	57 × 250 × 381 × 341 mm	2 1/4 × 9 9/16 × 15 × 13 7/16 in	
	2.51 m ² /pal	27 ft ² /pal	

PRESCOTT 4.5"

	A	B	C
	(H × D × L1 × L2)		
A	114 × 250 × 229 × 189 mm	4 1/2 × 9 9/16 × 9 × 7 7/16 in	
B	114 × 250 × 305 × 265 mm	4 1/2 × 9 9/16 × 12 × 10 7/16 in	
C	114 × 250 × 381 × 341 mm	4 1/2 × 9 9/16 × 15 × 13 7/16 in	
	2.51 m ² /pal	27 ft ² /pal	

CORNER 2.25" Pillar height 1 029 mm/40 1/2 in

	(H × D × L)	
	57 × 250 × 360 mm	2 1/4 × 9 9/16 × 14 3/16 in
	72 units/pal	

CORNER 4.5" Pillar height 1 029 mm/40 1/2 in

	(H × D × L)	
	114 × 250 × 360 mm	4 1/2 × 9 9/16 × 14 3/16 in
	36 units/pal	

Stonedge
COLLECTION



MINI-CRETA ARCHITECTURAL

WALL COLLECTION DOUBLE-SIDED

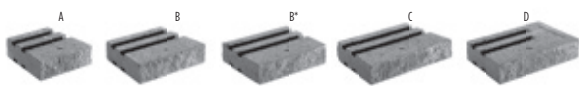


CHESTNUT BROWN



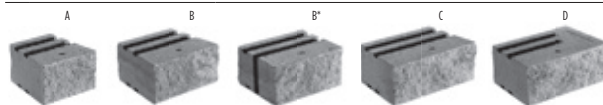
SHALE GREY CHAMPLAIN GREY SANDLEWOOD CHESTNUT BROWN CHOCOLATE BROWN* ONYX BLACK*

MINI-CRETA 3" ARCHITECTURAL



	(H × D × L1 × L2)	
A	75 × 250 × 230 × 180 mm	2 15/16 × 9 13/16 × 9 1/16 × 7 1/16 in
B	75 × 250 × 300 × 250 mm	2 15/16 × 9 13/16 × 11 13/16 × 9 13/16 in
B*	75 × 250 × 300 × 300 mm	2 15/16 × 9 13/16 × 11 13/16 × 11 13/16 in
C	75 × 250 × 375 × 325 mm	2 15/16 × 9 13/16 × 14 3/4 × 12 13/16 in
D	75 × 250 × 375 × 350 mm	2 15/16 × 9 13/16 × 14 3/4 × 13 3/4 in
	2.23 m ² /pal	24 ft ² /pal
	*1.11 m ² /half pal	*12 ft ² /half pal

MINI-CRETA 6" ARCHITECTURAL



	(H × D × L1 × L2)	
A	150 × 250 × 230 × 180 mm	5 7/8 × 9 13/16 × 9 1/16 × 7 1/16 in
B	150 × 250 × 300 × 250 mm	5 7/8 × 9 13/16 × 11 13/16 × 9 13/16 in
B*	150 × 250 × 300 × 300 mm	5 7/8 × 9 13/16 × 11 13/16 × 11 13/16 in
C	150 × 250 × 375 × 325 mm	5 7/8 × 9 13/16 × 14 3/4 × 12 13/16 in
D	150 × 250 × 375 × 350 mm	5 7/8 × 9 13/16 × 14 3/4 × 13 3/4 in
	2.79 m ² /pal	30 ft ² /pal

PILLAR 24" MINI-CRETA 6" ARCHITECTURAL Pillar height 900 mm/35 7/16 in



	(H × D × L)
	150 × 203 × 406 mm 5 7/8 × 8 × 16 in
	24 units/pal

* Onyx black and chocolate brown are only available in half-pallets for Mini-Creta 3" Architectural.



MINI-CRETA

WALL COLLECTION DOUBLE-SIDED



SANDLEWOOD



ONYX BLACK*



CHOCOLATE BROWN*



AUTUMN RED



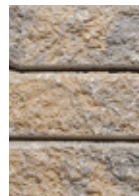
HARVEST GOLD



CHESTNUT BROWN



MOJAVE BEIGE



SANDLEWOOD

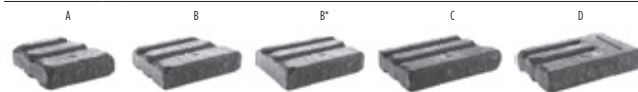


CHAMPLAIN GREY



SHALE GREY

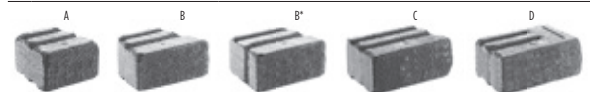
MINI-CRETA 3"



(H × D × L1 × L2)

	A	B	B*	C	D
A	75 × 250 × 230 × 180 mm	2 5/16 × 9 9/16 × 9 1/16 × 7 1/16 in			
B	75 × 250 × 300 × 250 mm	2 5/16 × 9 9/16 × 11 9/16 × 9 9/16 in			
B*	75 × 250 × 300 × 300 mm	2 5/16 × 9 9/16 × 11 9/16 × 11 9/16 in			
C	75 × 250 × 375 × 325 mm	2 5/16 × 9 9/16 × 14 3/4 × 12 5/16 in			
D	75 × 250 × 375 × 350 mm	2 5/16 × 9 9/16 × 14 3/4 × 13 3/4 in			
	2.23 m ² /pal		24 ft ² /pal		
	*1.11 m ² /half pal		*12 ft ² /half pal		

MINI-CRETA 6"



(H × D × L1 × L2)

	A	B	B*	C	D
A	150 × 250 × 230 × 180 mm	5 7/8 × 9 9/16 × 9 1/16 × 7 1/16 in			
B	150 × 250 × 300 × 250 mm	5 7/8 × 9 9/16 × 11 9/16 × 9 9/16 in			
B*	150 × 250 × 300 × 300 mm	5 7/8 × 9 9/16 × 11 9/16 × 11 9/16 in			
C	150 × 250 × 375 × 325 mm	5 7/8 × 9 9/16 × 14 3/4 × 12 5/16 in			
D	150 × 250 × 375 × 350 mm	5 7/8 × 9 9/16 × 14 3/4 × 13 3/4 in			
	2.79 m ² /pal		30 ft ² /pal		

PILLAR 24" MINI-CRETA 3" Pillar height 900 mm/35 7/16 in



(H × D × L)

	75 × 203 × 406 mm	2 7/8 × 8 × 16 in
	48 units/pal	

PILLAR 24" MINI-CRETA 6" Pillar height 900 mm/35 7/16 in



(H × D × L)

	150 × 203 × 406 mm	5 7/8 × 8 × 16 in
	24 units/pal	

* Onyx black and chocolate brown are only available in half-pallets for Mini-Creta 3".





RAFFINATO

WALL COLLECTION DOUBLE-SIDED



RAFFINATO POLISHED BEIGE CREAM



RAFFINATO 90 MM SMOOTH



(H × D × L1 × L2)
 90 × 249 × 397 × 362 mm
 3 9/16 × 9 13/16 × 15 5/8 × 14 1/4 in
 2.29 m²/pal - 24.61 ft²/pal
 64 units/pal

RAFFINATO 180 MM SMOOTH



(H × D × L1 × L2)
 180 × 249 × 397 × 362 mm
 7 1/16 × 9 13/16 × 15 5/8 × 14 1/4 in
 2.29 m²/pal - 24.61 ft²/pal
 32 units/pal

RAFFINATO 90 MM POLISHED



(H × D × L1 × L2)
 90 × 248 × 397 × 362 mm
 3 9/16 × 9 3/4 × 15 5/8 × 14 1/4 in
 2.14 m²/pal - 23.08 ft²/pal
 60 units/pal

RAFFINATO 180 MM POLISHED



(H × D × L1 × L2)
 180 × 248 × 397 × 362 mm
 7 1/16 × 9 3/4 × 15 5/8 × 14 1/4 in
 2.14 m²/pal - 23.08 ft²/pal
 30 units/pal

90 MM PILLARS & CORNERS SMOOTH

Pillar height 1 080 mm/42 1/2 in



(H × D × L)
 90 × 249 × 359 mm
 3 9/16 × 9 13/16 × 14 1/8 in
 48 units/pal

180 MM PILLARS & CORNERS SMOOTH

Pillar height 1 080 mm/42 1/2 in



(H × D × L)
 180 × 249 × 359 mm
 7 1/16 × 9 13/16 × 14 1/8 in
 24 units/pal

90 MM PILLARS & CORNERS POLISHED

Pillar height 900 mm/35 7/16 in



(H × D × L)
 90 × 248 × 357 mm
 3 9/16 × 9 3/4 × 14 1/16 in
 40 units/pal

180 MM PILLARS & CORNERS POLISHED

Pillar height 900 mm/35 7/16 in



(H × D × L)
 180 × 248 × 357 mm
 7 1/16 × 9 3/4 × 14 1/16 in
 20 units/pal



RÖCKA

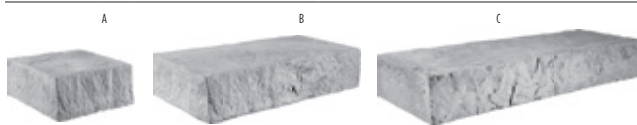
WALL & EDGE DOUBLE-SIDED



ROCK GARDEN BROWN- FURNITURE : GARDENCOTTAGE.COM



RÖCKA WALL & EDGE DOUBLE-SIDED



	(H × D × L1 × L2)	
A	152 × 197 × 203 × 337 mm	6 × 7 3/4 × 8 × 13 1/4 in
B	152 × 197 × 203 × 673 mm	6 × 7 3/4 × 8 × 26 1/2 in
C	152 × 197 × 203 × 1 010 mm	6 × 7 3/4 × 8 × 39 3/4 in
	1.85 m ² /pal	19.88 ft ² /pal

Stonedge
COLLECTION



SUPREMA

SPLIT FACE WALL



SHALE GREY



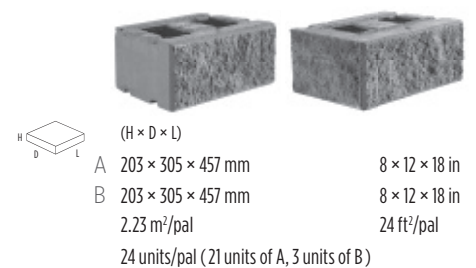
SHALE GREY

CHAMPLAIN
GREY

SANDLEWOOD

MOJAVE BEIGE

SUPREMA SPLIT FACE



For an authentic look, each colour option is composed of a variety of darker & lighter tones. Natural ingredients such as granite are present within the recipe to allow for a range in tones, veining and textures from one stone to another. Colour samples for reference only. Actual product colours may vary.



MOJAVE BEIGE

SEMMA

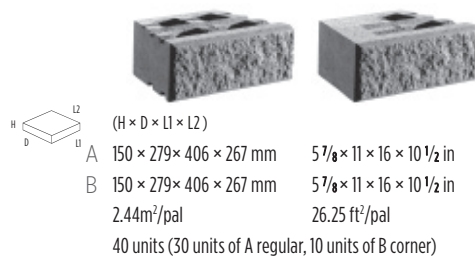
WALL COLLECTION



MOJAVE BEIGE

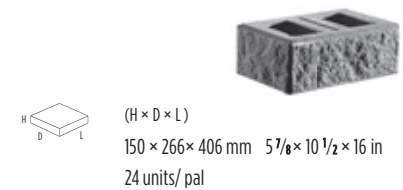


SEMMA SPLIT-FACE DOUBLE-SIDED - REGULAR & CORNER

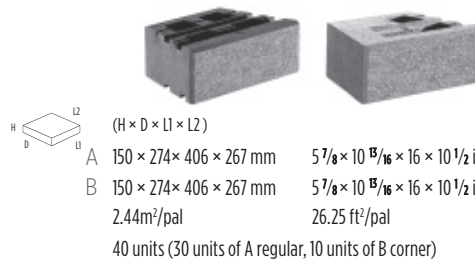


SEMMA PILLAR SPLIT-FACE

Pillar height 900 mm/35 7/16 in

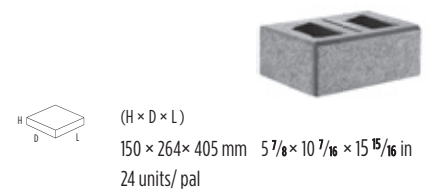


SEMMA POLISHED DOUBLE-SIDED - REGULAR & CORNER



SEMMA PILLAR POLISHED

Pillar height 900 mm/35 7/16 in



For an authentic look, each colour option is composed of a variety of darker & lighter tones. Natural ingredients such as granite are present within the recipe to allow for a range in tones, veining and textures from one stone to another. Colour samples for reference only. Actual product colours may vary.



BALI TRAVERTINA CAP & TRAVERTINA SLAB RIVIERA



CAPS

CAP IT OFF.

They say good design is found at the core, but great design is in the details. Techo-Bloc caps are the finishing touch to any landscape project. Offered in a large array of colours, finishes and shapes, each cap serves many purposes. See the Cap Selection Guide to see which caps fit your application.



BALTIMORE WALL SHALE GREY

COMPATIBILITY CHART

WALLS & PILLARS	CAPS														
	Aged	Architectural cap	Brandon cap	Bullnose	Bullnose Grande	Graphix cap	Piedimonte	Piedimonte 28" x 28"	Portofino	Prima 14"	Raffinato	Stonedge 28" x 28"	York	York 28" x 28"	York 32" x 32"
Baltimore 90 & 180 mm	●	●	●		●		●		●	●	●		●		
Borealis does not require a cap															
Brandon 90 & 180 mm			●	●	●		●		●				●		
Brandon 90 & 180 mm pillar								●				●		●	
Graphix						●	●				●				
Manchester	●	●					●		●	●	●		●		
Mini-Creta Collection	●	●	●	●	●		●		●	●	●		●		
Mini-Creta Pillar 24" Collection								●				●		●	
Prescott Collection							●		●		●		●		
Prescott Pillar Collection								●				●		●	
Raffinato Collection					●	●	●				●				
Raffinato Pillar Collection								●			●				
Semma	●	●	●	●		●	●		●	●	●		●		
Semma Pillar															●
Suprema						●	●		●	●	●		●		

NOTE: The combinations shown in this chart are not complete. Other possible combinations exist.

APPLICATIONS	CAPS																					
	Aged	Architectural cap	Bali Travertina	Brandon cap	Bullnose	Bullnose Grande	Graphix cap	Piedimonte 12" x 30"	Piedimonte 14" x 30"	Piedimonte 28" x 28"	Portofino	Prima 14"	Raffinato	Stonedge 28" x 28"	York wall caps 16", 32", 48"	York 14" x 48"	York 24" x 36"	York 28" x 28"	York 32" x 32"	Blu 45 mm	Venetian	
Step	●	●		●	●	●	●	●	●		●	●	●		●	●						
Concrete & step overlay system																					●	●
Pool coping			●		●	●		●	●		●		●		●							
Wall single-sided	●	●		●	●	●	●	●	●		●	●	●		●	●						
Wall double-sided	●	●				●		●	●		●	●	●		●	●						
Counter top									●	●					●		●	●	●			
Pillar										●				●				●	●			

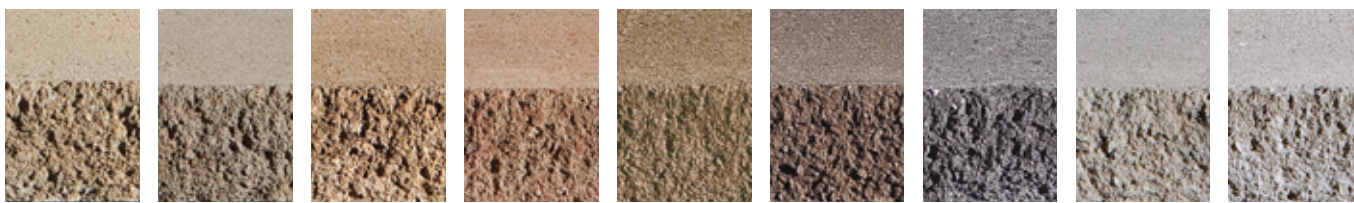
LEGEND: ● NEW PRODUCT

AGED

CAP DOUBLE-SIDED



HARVEST GOLD



SANDLEWOOD

CHESTNUT BROWN

MOJAVE BEIGE

AUTUMN RED

HARVEST GOLD

CHOCOLATE BROWN*

ONYX BLACK*

CHAMPLAIN GREY

SHALE GREY

AGED



(H × D × L1 × L2)

A	75 × 317 × 225 × 165 mm	2 9/16 × 12 1/2 × 8 7/8 × 6 1/2 in
B	75 × 317 × 300 × 240 mm	2 9/16 × 12 1/2 × 11 9/16 × 9 7/16 in
C	75 × 317 × 375 × 315 mm	2 9/16 × 12 1/2 × 14 3/4 × 12 3/8 in
C*	75 × 317 × 375 × 345 mm	2 9/16 × 12 1/2 × 14 3/4 × 13 9/16 in
	20.12 lin. m/pal	66 lin. ft./pal
	*10.06 lin. m/half pal	*33 lin. ft./half pal

* Onyx black and chocolate brown are only available in half-pallets.



NEW ARCHITECTURAL

DOUBLE-SIDED CAP



CHESTNUT BROWN



SANDLEWOOD

MOJAVE BEIGE

AUTUMN RED

CHOCOLATE BROWN

HARVEST GOLD

CHESTNUT BROWN

ONYX BLACK

CHAMPLAIN GREY

SHALE GREY

ARCHITECTURAL



(H × D × L1 × L2)

A	75 × 317 × 225 × 165 mm	2 5/16 × 12 1/2 × 8 7/8 × 6 1/2 in
B	75 × 317 × 300 × 240 mm	2 5/16 × 12 1/2 × 11 5/16 × 9 7/16 in
C	75 × 317 × 375 × 315 mm	2 5/16 × 12 1/2 × 14 3/4 × 12 3/8 in
C*	75 × 317 × 375 × 345 mm	2 5/16 × 12 1/2 × 14 3/4 × 13 9/16 in
	20.12 lin. m /pal	66 lin. ft./pal



BALI TRAVERTINA

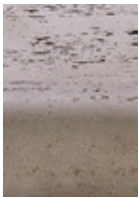
POOL COPING



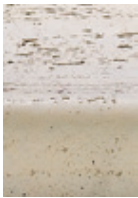
IVORY



RIVIERA



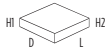
ROCK GARDEN
BROWN



IVORY

■ ■ ■ TONE
■ ■ ■ DISTRIBUTION
■ ■ ■ HIGH

BALI TRAVERTINA



(H1 × H2 × D × L)

57 × 70 × 305 × 406 mm 2 1/4 × 2 3/4 × 12 × 16 in

11.38 lin. m/pal 37.34 lin. ft./pal

28 units/pal

Stonedge
COLLECTION



NEW BRANDON

CAP



CHAMPLAIN GREY



SHALE GREY



CHAMPLAIN GREY



SANDLEWOOD

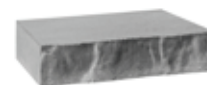


CHESTNUT BROWN



ONYX BLACK

BRANDON CAP



(H × D × L)

90 × 356 × 406 mm

7.32 lin. m/pal

18 units

3 9/16 × 14 × 16 in

24 lin. ft./pal



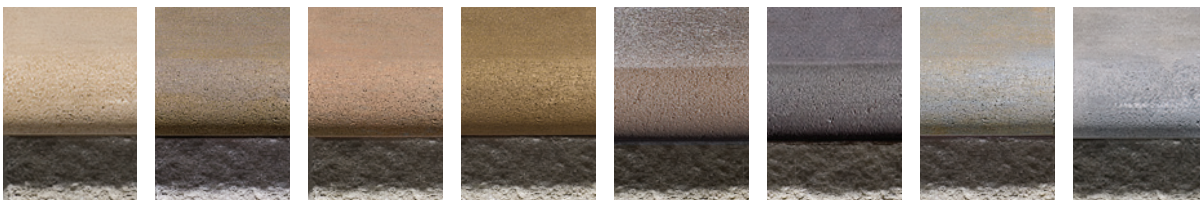
For an authentic look, each colour option is composed of a variety of darker & lighter tones. Natural ingredients such as granite are present within the recipe to allow for a range in tones, veining and textures from one stone to another. Colour samples for reference only. Actual product colours may vary.

BULLNOSE

CAP & POOL COPING



ONYX BLACK



SANDLEWOOD

CHESTNUT BROWN

MOJAVE BEIGE

HARVEST GOLD

CHOCOLATE BROWN*

ONYX BLACK*

CHAMPLAIN GREY

SHALE GREY

BULLNOSE



	(H × D × L)	
	60 × 305 × 150 mm	2 3/8 × 12 × 5 7/8 in
	27 lin. m/pal	88.60 lin. ft./pal
	180 units/pal	
	* 13.50 lin. m/pal	* 43.60 lin. ft./pal
	* 90 units/pal	

* Onyx black and chocolate brown are only available in half-pallets.

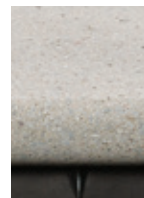


NEW BULLNOSE GRANDE

CAP & POOL COPING



GREYED NICKEL



GREYED NICKEL



BEIGE CREAM

BULLNOSE GRANDE



(H × D × L)

60 × 353 × 750 mm

9 lin. m/pal

12 units

2³/₈ × 13⁷/₈ × 29¹/₂ in

29.53 lin. ft./pal

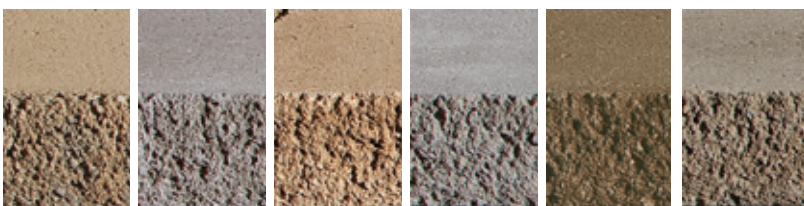


ESCALA 3.5"

CAP



MOJAVE BEIGE



SANDLEWOOD SHALE GREY MOJAVE BEIGE CHAMPLAIN GREY HARVEST GOLD CHESTNUT BROWN

ESCALA 3.5" CAP



(H × D × L)

A	90 × 380 × 225 × 165 mm	$3\frac{9}{16} \times 14\frac{5}{16} \times 8\frac{7}{8} \times 6\frac{1}{2}$ in
B	90 × 380 × 300 × 240 mm	$3\frac{9}{16} \times 14\frac{5}{16} \times 11\frac{5}{16} \times 9\frac{7}{16}$ in
C	90 × 380 × 375 × 315 mm	$3\frac{9}{16} \times 14\frac{5}{16} \times 14\frac{3}{4} \times 12\frac{3}{8}$ in

17.28 lin. m/pal.

56.70 lin. ft/pal.



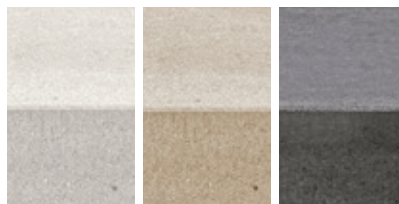
NEW GRAPHIX

REVERSIBLE CAP



SMOOTH SIDE ONYX BLACK

smooth side



GREYED NICKEL BEIGE CREAM ONYX BLACK

split side



GREYED NICKEL BEIGE CREAM ONYX BLACK

GRAPHIX CAP 14"×20"



SMOOTH SIDE



SPLIT FACE SIDE



(H × D × L)

75 × 355 × 508 mm

14.22 lin. m/pal

28 units

2 15/16 × 14 × 20 in

46.67 lin. ft./pal



PIEDIMONTE

CAP COLLECTION DOUBLE-SIDED



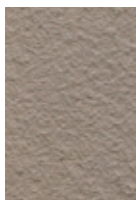
RIVIERA



RIVIERA



ONYX BLACK



ROCK GARDEN
BROWN

■ ■ ■ TONE
■ ■ ■ DISTRIBUTION
■ ■ ■ HIGH

PIEDIMONTE 12"×30" WALL CAP



(H × D × L)

57 × 298 × 762 mm 2 1/4 × 11 3/4 × 30 in

24.39 lin. m/pal 80 lin. ft./pal

32 units

PIEDIMONTE 14"×30" WALL & STEP CAP



(H × D × L)

57 × 356 × 762 mm 2 1/4 × 14 × 30 in

18.29 lin. m/pal 60 lin. ft./pal

24 units

PIEDIMONTE 28"×28" PILLAR CAP



(H × D × L)

73 × 711 × 711 mm 2 7/8 × 28 × 28 in

6 units

Stonedge
COLLECTION



PORTOFINO

CAP DOUBLE-SIDED

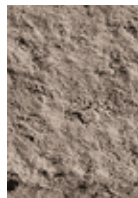


BAJA BEIGE

TONE
 DISTRIBUTION
MEDIUM



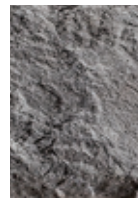
BAJA BEIGE



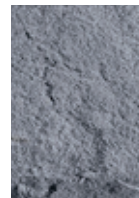
ROCK GARDEN
BROWN



CHOCOLATE
BROWN



ONYX BLACK

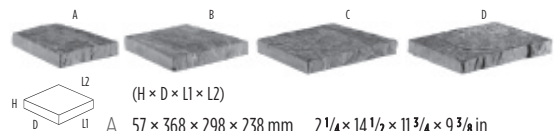


AZZURRO



RIVIERA

PORTOFINO



(H × D × L1 × L2)

A	57 × 368 × 298 × 238 mm	2 1/4 × 14 1/2 × 11 3/4 × 9 3/8 in
B	57 × 368 × 403 × 349 mm	2 1/4 × 14 1/2 × 15 7/8 × 13 3/4 in
C	57 × 368 × 478 × 419 mm	2 1/4 × 14 1/2 × 18 15/16 × 16 1/2 in
D	57 × 368 × 483 × 483 mm	2 1/4 × 14 1/2 × 19 × 19 in
	15.30 lin. m/pal	50.22 lin. ft./pal

Stonedge
COLLECTION



PRIMA 14"

SPLIT FACE & POLISHED CAP



SPLIT FACE SHALE GREY



POLISHED SHALE GREY

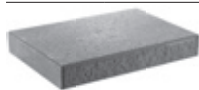


PRIMA 14" SPLIT FACE



$(H \times D \times L)$
 $75 \times 356 \times 406 \text{ mm}$ $2 \frac{15}{16} \times 14 \times 16 \text{ in}$
 19.51 lin. m/pal 64 lin. ft./pal
 48 units

PRIMA 14" POLISHED



$(H \times D \times L)$
 $75 \times 356 \times 406 \text{ mm}$ $2 \frac{15}{16} \times 13 \frac{3}{4} \times 16 \text{ in}$
 19.51 lin. m/pal 64 lin. ft./pal
 48 units

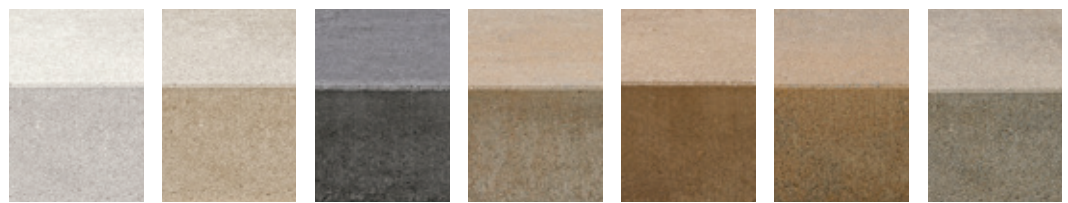


RAFFINATO

CAP DOUBLE-SIDED



GREYED NICKEL



GREYED NICKEL

BEIGE CREAM

ONYX BLACK

CHAMPLAIN
GREY

CHESTNUT
BROWN

SANDLEWOOD

SHALE GREY

RAFFINATO CAP 14" x 28"



(H x D x L)

90 x 356 x 711 mm

17.07 lin. m/pal

24 units

3 9/16 x 14 x 28 in

56 lin. ft./pal



For an authentic look, each colour option is composed of a variety of darker & lighter tones. Natural ingredients such as granite are present within the recipe to allow for a range in tones, veining and textures from one stone to another. Colour samples for reference only. Actual product colours may vary.

STONEDGE

PILLAR CAP



CHOCOLATE BROWN



ONYX BLACK



CHOCOLATE BROWN



BAJA BEIGE

■ ■ ■ TONE
■ ■ ■ DISTRIBUTION
■ ■ ■ MEDIUM

STONEDGE



(H × D × L)
57 × 711 × 711 mm 2 1/4 × 28 × 28 in
6 units

Stonedge
■■■ COLLECTION



YORK

CAP



COUNTER TOP 24" × 36" RIVIERA

TONE
DISTRIBUTION
HIGH



CHOCOLATE BROWN



IVORY



ONYX BLACK



ROCK GARDEN BROWN



RIVIERA

YORK 28" PILLAR CAP



(H × D × L)
89 × 730 × 730 mm 3 1/2 × 28 3/4 × 28 3/4 in
6 units

YORK 32" PILLAR CAP



(H × D × L)
89 × 813 × 813 mm 3 1/2 × 32 × 32 in
6 units

YORK COUNTER TOP 24" × 36"



(H × D × L)
57 × 610 × 914 mm 2 1/4 × 24 × 36 in
16 units

YORK WALL CAP 14" × 48"



(H × D × L)
57 × 356 × 1 219 mm 2 1/4 × 14 × 48 in
14.63 lin. m/pal 48 lin. ft./pal
12 units

YORK WALL CAPS 16", 32" & 48"



(H × D × L)
57 × 356 × 406 mm 2 1/4 × 14 × 16 in
57 × 356 × 813 mm 2 1/4 × 14 × 32 in
57 × 356 × 1 219 mm 2 1/4 × 14 × 48 in
14.63 lin. m/pal 48 lin. ft./pal
6 units of each

Stonedge
COLLECTION





BLU 80 POLISHED GREYED NICKEL - FURNITURE : ROCHE-BOBOIS.COM



STEPS & OVERLAY SYSTEM

STEP IT UP.

No matter the topography of your outdoor project, Techo-Bloc offers you a wide variety of products to build steps for all applications. Whether you dream of a delicate winding outdoor stairway, envision a bold and imposing staircase built of large rock face steps or simply need a few steps to connect the different level pavilions in your outdoor patio, Techo-Bloc has the answer.

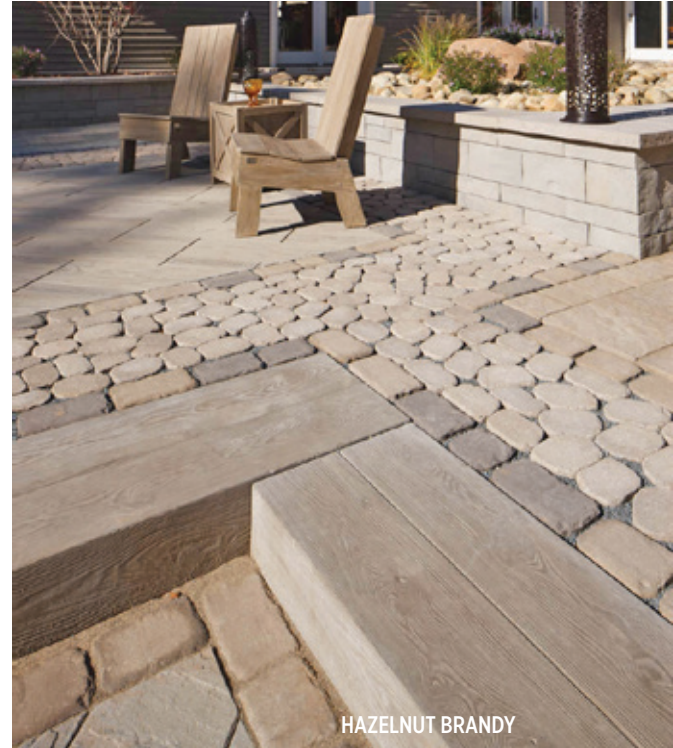
We also offer overlay systems to restore old concrete steps, patios and balconies by concealing the staining, cracking and unkept appearance of poured concrete with a maintenance-free & salt-resistant ultra-thin paving stone solution.

BOREALIS

STEP



HAZELNUT BRANDY



HAZELNUT BRANDY



SAUVIGNON OAK

HAZELNUT BRANDY

SMOKED PINE



BOREALIS STEP



(H × D1 × D2 × L)

152 × 400 × 406 × 1 219 mm 6 × 15 3/4 × 16 × 48 in

9.76 lin. m/pal

32 lin. ft./pal

8 units

Stonedge
COLLECTION



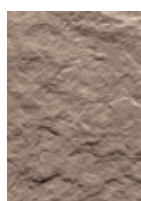


MAYA

STEP



RIVIERA



CHOCOLATE
BROWN



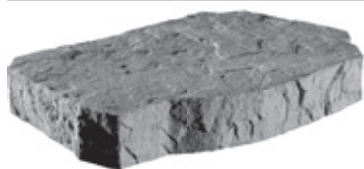
ROCK GARDEN
BROWN



BAJA BEIGE

■ ■ ■ TONE
■ ■ ■ DISTRIBUTION
■ ■ ■ MEDIUM

MAYA STEP



(H × D × L)

152 × 813 × 1219 mm

6 × 32 × 48 in

1.22 lin. m/pal

4 lin. ft./pal

1 unit

Stonedge
COLLECTION



RAFFINATO

STEP



GREYED NICKEL



GREYED NICKEL



BEIGE CREAM



ONYX BLACK

RAFFINATO STEP



(H × D × L)

180 × 368 × 1067 mm

9.6 lin. m/pal

9 units

7 1/16 × 14 1/2 × 42 in

31.5 lin. ft./pal



RÖCKA

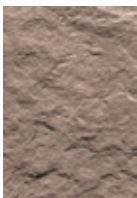
STEP COLLECTION



BAJA BEIGE



RIVIERA



CHOCOLATE BROWN



ROCK GARDEN BROWN



BAJA BEIGE



RÖCKA STEP 48" DOUBLE-SIDED



$(H \times D1 \times D2 \times L)$
 $152 \times 378 \times 359 \times 1219$ mm $6 \times 14\frac{7}{8} \times 14\frac{1}{8} \times 48$ in
 9.76 lin. m/pal 32 lin. ft./pal
 8 units

RÖCKA STEP 60"



$(H \times D1 \times D2 \times L)$
 $152 \times 387 \times 371 \times 1524$ mm $6 \times 15\frac{1}{4} \times 14\frac{5}{8} \times 60$ in
 3.05 lin. m/pal 10 lin. ft./pal
 2 units

Stonedge
COLLECTION



YORK

STEP



ROCK GARDEN BROWN

TONE
DISTRIBUTION
HIGH



RIVIERA



CHOCOLATE
BROWN

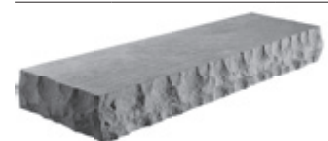


ROCK GARDEN
BROWN



BAJA BEIGE

YORK STEP



(H × D × L)
152 × 381 × 1524 mm 6 × 15 × 60 in
3.05 lin. m/pal 10 lin. ft./pal
2 units

Stonedge
COLLECTION



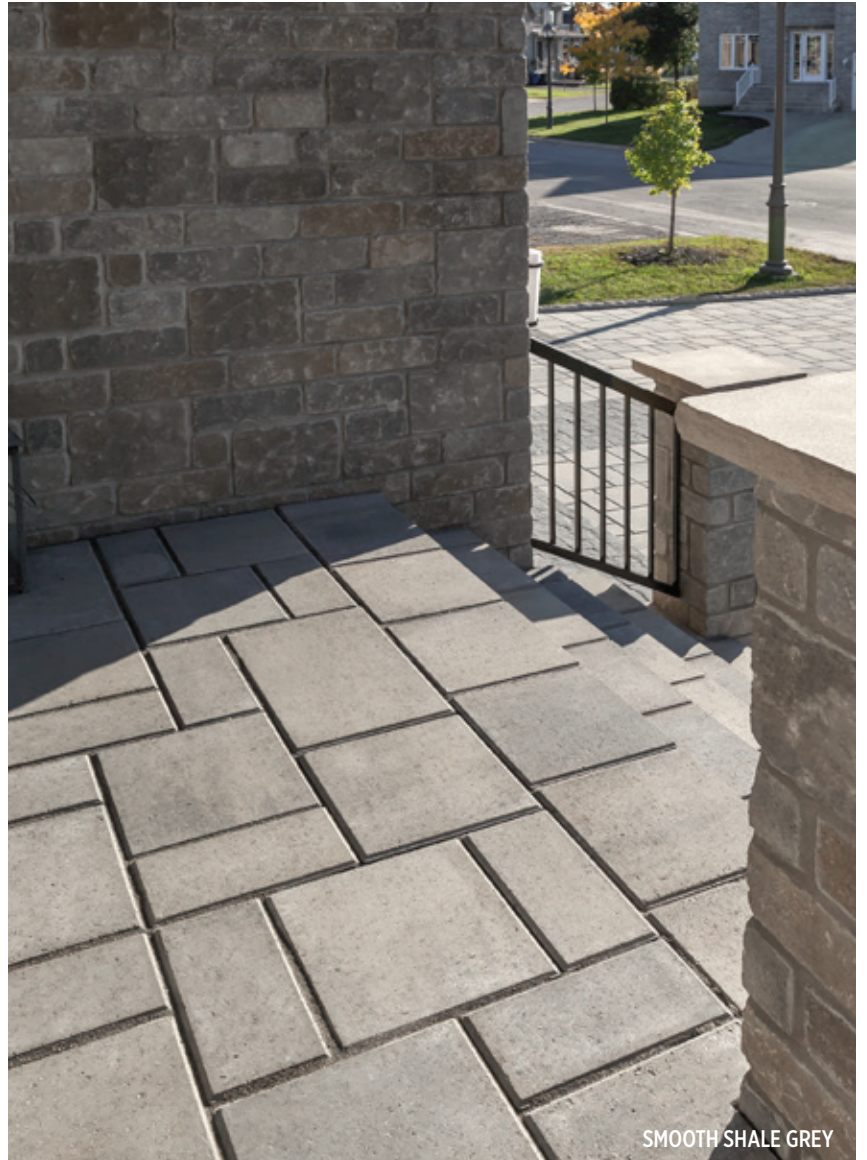
For an authentic look, each colour option is composed of a variety of darker & lighter tones. Natural ingredients such as granite are present within the recipe to allow for a range in tones, veining and textures from one stone to another. Colour samples for reference only. Actual product colours may vary.

BLU 45 MM

SLATE & SMOOTH OVERLAY SYSTEM



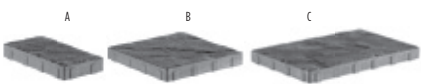
SLATE SANDEWOOD



SMOOTH SHALE GREY



BLU 45 MM - SLATE & SMOOTH



(H × D × L)		
A	45 × 330 × 165 mm	1 3/4 × 13 × 6 1/2 in
B	45 × 330 × 330 mm	1 3/4 × 13 × 13 in
C	45 × 330 × 495 mm	1 3/4 × 13 × 19 1/2 in
	11.84 m ² /pal	127.44 ft ² /pal



VENETIAN

SLATE & SMOOTH OVERLAY SYSTEM



VENETIAN RISER - SLATE & SMOOTH



SLATE

(H × D × L)
45 × 178 × 406 mm 1 3/4 × 7 × 16 in
19.52 lin. m/pal 64 lin. ft./pal
48 units

SMOOTH

45 × 178 × 397 mm 1 3/4 × 7 × 15 5/8 in
19.06 lin. m/pal 62.52 lin. ft./pal
48 units



SLATE

(H × D × L)
45 × 356 × 406 mm 1 3/4 × 14 × 16 in
19.52 lin. m/pal 64 lin. ft./pal
48 units

SMOOTH

45 × 356 × 397 mm 1 3/4 × 14 × 15 5/8 in
19.06 lin. m/pal 62.52 lin. ft./pal
48 units



For an authentic look, each colour option is composed of a variety of darker & lighter tones. Natural ingredients such as granite are present within the recipe to allow for a range in tones, veining and textures from one stone to another. Colour samples for reference only. Actual product colours may vary.



HAZELNUT BRANDY



EDGES

REDEFINE THE LIMITS.

Add curb appeal to your driveway and reduce maintenance of your walkways and flowerbeds with edging stones. Edging keeps the mulch in and the grass out of flowerbeds. Our edging product line is offered in both traditional and modern styles. Choose from nature-inspired colours to fit your home for a traditional look, or add a more contemporary touch to your home's exterior by opting for sharper lines and contrasting colours.



HARVEST GOLD

AVIGNON

EDGE



SHALE GREY



CHAMPLAIN GREY



SANDLEWOOD



CHESTNUT BROWN



HARVEST GOLD



MOJAVE BEIGE

AVIGNON



(H × D × L)

178 × 114 × 305 mm 7 × 4 1/2 × 12 in

27.44 lin. m/pal 90 lin. ft./pal

90 units/pal



HAZELNUT BRANDY

BOREALIS

WALL & EDGE



SMOKED PINE



HAZELNUT BRANDY



SAUVIGNON OAK

BOREALIS WALL & EDGE



(H × D1 × D2 × L)

152 × 197 × 203 × 1219 mm 6 × 7 3/4 × 8 × 48 in

2.97 m²/pal 32 ft²/pal

19.51 lin. m/pal 64 lin. ft./pal

16 units/pal

Stonedge
COLLECTION

TONE
DISTRIBUTION
HIGH

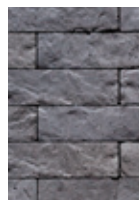




CHESTNUT BROWN

BRANDON

EDGE



ONYX BLACK



CHOCOLATE BROWN*



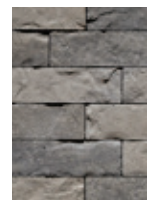
CHESTNUT BROWN



SANDLEWOOD

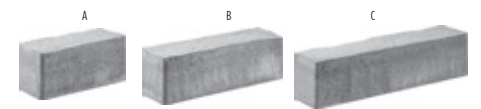


CHAMPLAIN GREY



SHALE GREY

BRANDON EDGE



(H × D × L)

A	180 × 100 × 225 mm	7 1/16 × 3 15/16 × 8 7/8 in
B	180 × 100 × 325 mm	7 1/16 × 3 15/16 × 12 15/16 in
C	180 × 100 × 425 mm	7 1/16 × 3 15/16 × 16 3/4 in
	42.90 lin. m/pal	140.75 lin. ft. /pal
	44 units of each	





SHALE GREY

PIETRA

EDGE



SHALE GREY



CHAMPLAIN GREY



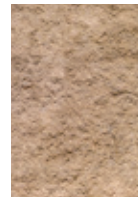
SANDLEWOOD



CHESTNUT BROWN



HARVEST GOLD



MOJAVE BEIGE

PIETRA



(H × D × L)

A 114 × 80 × 225 mm

B 114 × 80 × 300 mm

C 114 × 80 × 375 mm

29.20 lin. m/pal

32 units of each

4 1/2 × 3 1/8 × 8 7/8 in

4 1/2 × 3 1/8 × 11 15/16 in

4 1/2 × 3 1/8 × 14 3/4 in

96 lin. ft./pal



ONYX BLACK

RAFFINATO

PILLAR & EDGE



GREYED NICKEL



BEIGE CREAM

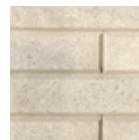


ONYX BLACK

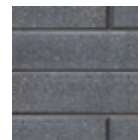
smooth



GREYED NICKEL



BEIGE CREAM



ONYX BLACK

polished

RAFFINATO 90 MM SMOOTH



(H × D × L)

90 × 249 × 359 mm

3 9/16 × 9 13/16 × 14 1/8 in

48 units/pal

RAFFINATO 90 MM POLISHED



(H × D × L)

90 × 248 × 357 mm

3 9/16 × 9 3/4 × 14 1/16 in

40 units/pal

RAFFINATO 180 MM SMOOTH



(H × D × L)

180 × 249 × 359 mm

7 1/16 × 9 13/16 × 14 1/8 in

24 units/pal

RAFFINATO 180 MM POLISHED



(H × D × L)

180 × 248 × 357 mm

7 1/16 × 9 3/4 × 14 1/16 in

20 units/pal



RÖCKA

WALL & EDGE



BAJA BEIGE

ROCK GARDEN BROWN

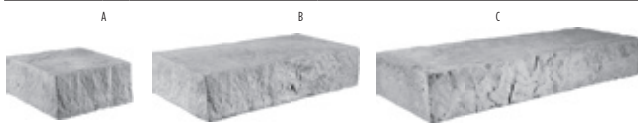
CHOCOLATE BROWN

RIVIERA



ROCK GARDEN BROWN

RÖCKA WALL & EDGE DOUBLE-SIDED



(H × D × L1 × L2)

A	152 × 197 × 203 × 337 mm	6 × 7 ³ / ₄ × 8 × 13 ¹ / ₄ in
B	152 × 197 × 203 × 673 mm	6 × 7 ³ / ₄ × 8 × 26 ¹ / ₂ in
C	152 × 197 × 203 × 1 010 mm	6 × 7 ³ / ₄ × 8 × 39 ³ / ₄ in
	12.12 lin.m/pal	39.75 lin.ft/pal

Stonedge
COLLECTION

■ ■ ■ TONE
DISTRIBUTION
■ ■ ■ MEDIUM



TUNDRA

EDGE



SHALE GREY

CHAMPLAIN GREY

SANDLEWOOD



CHESTNUT BROWN

HARVEST GOLD

MOJAVE BEIGE

TUNDRA



(H1 × H2 × D1 × D2 × L)

	90 × 160 × 102 × 225 × 250 mm	3 ⁹ / ₁₆ × 6 ⁵ / ₁₆ × 4 × 8 ⁷ / ₈ × 9 ¹⁵ / ₁₆ in
	16 lin. m/pal	52.50 lin. ft./pal
	64 units/pal	



SHALE GREY



MANCHESTER FOYER HARVEST GOLD



OUTDOOR FEATURES

SPARK UP YOUR PATIO.

With more space than rooms have to offer, it seems as if the backyard is becoming the party room. Homeowners are looking for creative and functional ways to entertain their guests under the open sky. Fire Pits, Pizza Ovens and Fireplaces can be found in this section for all your outdoor entertaining needs.

GRILL ISLAND



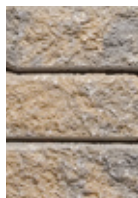
CHESTNUT BROWN



SHALE GREY



CHAMPLAIN
GREY



SANDLEWOOD



MOJAVE BEIGE



CHESTNUT
BROWN



HARVEST GOLD



AUTUMN RED



CHOCOLATE
BROWN*



ONYX BLACK*

For technical information, a full list of products and installation details please refer to the Techo-Spec book. Appliances not included.
* Onyx black and chocolate brown are only available in half-pallets.

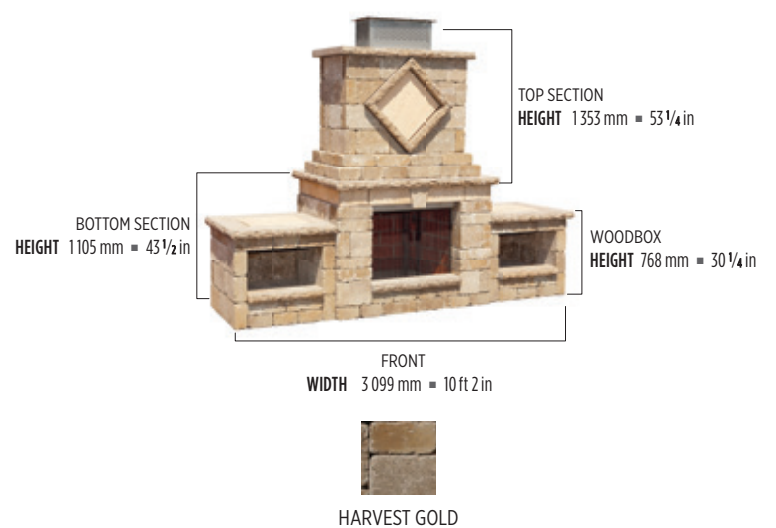
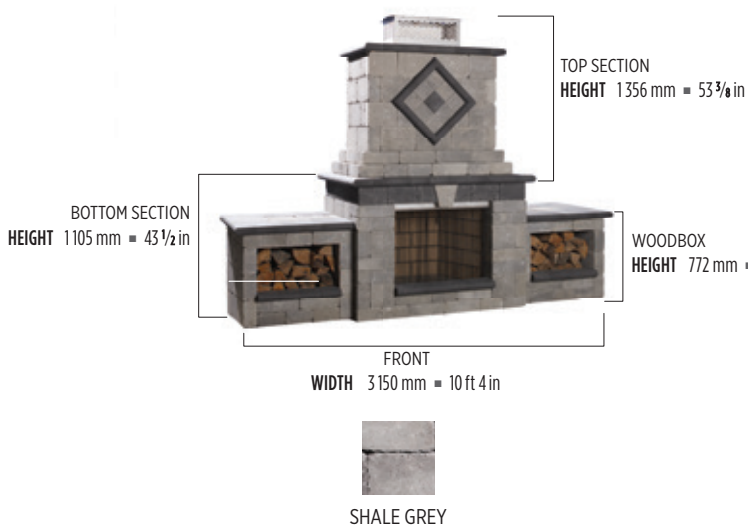


MANCHESTER FOYER

FIRE PLACE



HARVEST GOLD



Pre-assembled (sold separately). The harvest gold and shale grey fireplace differ both in colour and slightly in design. The harvest gold uses York caps while the shale grey uses Bullnose caps. Please refer to the Techo-Spec book for details.

For an authentic look, each colour option is composed of a variety of darker & lighter tones. Natural ingredients such as granite are present within the recipe to allow for a range in tones, veining and textures from one stone to another. Colour samples for reference only. Actual product colours may vary.

MANCHESTER ELITE

PIZZA OVEN

Sold as a kit, 2-piece modular system.



SHALE GREY



HARVEST GOLD

SHALE GREY



The chamber for the pizza oven can be purchased separately for custom pizza oven builds. Refer to Techo-Specs for product details.

MANCHESTER ELITE TOP SECTION

HEIGHT 1260 mm ■ 49 5/8 in

WIDTH 1251 mm ■ 49 1/4 in

LENGTH 1248 mm ■ 49 1/8 in

MANCHESTER ELITE BOTTOM SECTION

HEIGHT 1060 mm ■ 41 3/4 in

WIDTH 1251 mm ■ 49 1/4 in

LENGTH 1492 mm ■ 58 3/4 in

Comes with various pizza accessories. The Manchester Elite pizza oven kit includes colour accent pieces in each kit : the shale grey version includes onyx black accents; the harvest gold includes chocolate brown accents.



MANCHESTER RUSTIC

PIZZA OVEN

Modular system, Sold as a kit not pre-assembled

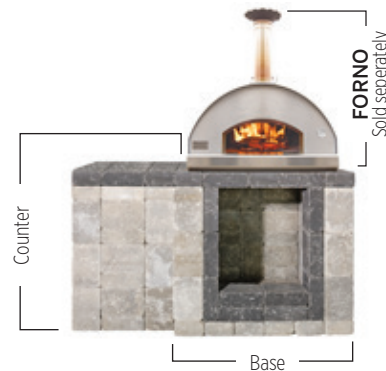


SHALE GREY



HARVEST GOLD

SHALE GREY



MANCHESTER RUSTIC BASE

HEIGHT 1100 mm ■ 43 5/16 in

WIDTH 1100 mm ■ 43 5/16 in

LENGTH 1200 mm ■ 47 1/4 in

MANCHESTER RUSTIC COUNTER

HEIGHT 1090 mm ■ 42 5/16 in

WIDTH 940 mm ■ 37 in

LENGTH 762 mm ■ 30 in

Base and counter kits are sold separately. Upon ordering, specify counter and/or base kits. The Manchester Rustic pizza oven kit includes colour accent pieces in each kit : the shale grey version includes onyx black accents; the harvest gold includes chocolate brown accents.



RAFFINATO

PIZZA OVEN



GREYED NICKEL BEIGE CREAM



RAFFINATO PIZZA OVEN BASE

HEIGHT	990 mm ■ 39 in
WIDTH	1 077 mm ■ 42 3/8 in
LENGTH	1 216 mm ■ 47 7/8 in

RAFFINATO PIZZA OVEN COUNTER

HEIGHT	990 mm ■ 39 in
WIDTH	940 mm ■ 37 in
LENGTH	762 mm ■ 30 in

Base and counter kits are sold separately. Upon ordering, specify counter and/or base kits. The Raffinato pizza oven kit includes colour accent pieces in each kit: the greyed nickel version includes onyx black accents; the beige cream includes greyed nickel accents.



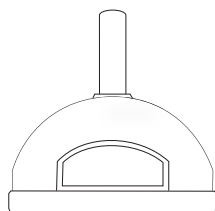
GREYED NICKEL

FORNO

OVEN



Comes with various pizza accessories:
37" long wood pizza oven brush
42" long wood pizza peel (spatula)



FORNO

HEIGHT	1 160 mm ■ 45 11/16 in
WIDTH	855 mm ■ 33 11/16 in
LENGTH	980 mm ■ 38 9/16 in



PRESCOTT

FIRE PIT

Sold as a kit not pre-assembled



ROCK GARDEN BROWN



RIVIERA



ROCK GARDEN BROWN

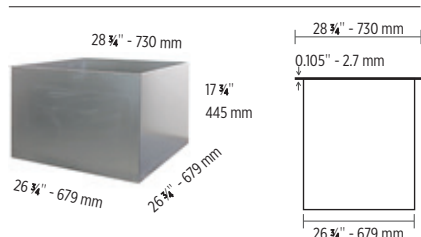
TONE
DISTRIBUTION
MEDIUM

PRESCOTT FIRE PIT

HEIGHT 457 mm = 18 in
WIDTH 1314 mm = 51³/₄ in
LENGTH 1314 mm = 51³/₄ in

Piedimonte caps included.
Techo-Bloc is not responsible for any damages to the fire pit if it is not installed with a sleeve or accessory kit.

PRESCOTT INSERT



RAFFINATO

FIRE PIT
Sold as a kit not pre-assembled



GREYED NICKEL



GREYED NICKEL

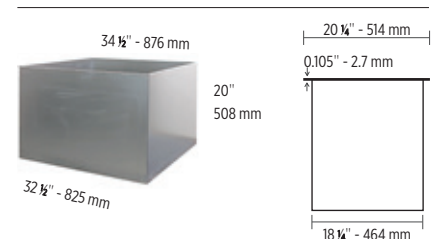
BEIGE CREAM

RAFFINATO FIRE PIT

HEIGHT 540 mm ■ 21¹/₄ in
WIDTH 1054 mm ■ 41¹/₂ in
LENGTH 1419 mm ■ 55⁷/₈ in

12" x 24" caps included.
Techo-Bloc is not responsible for any damages to the fire pit if it is not installed with a sleeve or accessory kit.

RAFFINATO INSERT





VALENCIA

FIRE PIT



CHESTNUT BROWN



CHESTNUT BROWN



AUTUMN RED



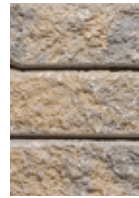
HARVEST GOLD



CHESTNUT BROWN



MOJAVE BEIGE



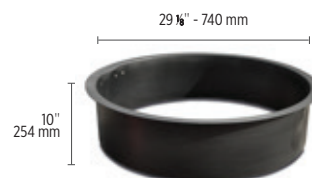
SANDLEWOOD



CHAMPLAIN GREY



SHALE GREY



Insert sold separately.

Techo-Bloc is not responsible for any damages to the fire pit if it is not installed with a sleeve or accessory kit.

VALENCIA FIRE PIT



(H x D x L)

75 x 250 x 247 mm

2 9/16 x 9 15/16 x 9 3/4 in

Height 0.375 m (375 mm) 14 3/4 in

Exterior Diameter 1.243 m (1243 mm) 48 5/16 in (4' 1")

Interior Diameter 0.74 m (740 mm) 29 1/8 in (2' 5")

80 units



For an authentic look, each colour option is composed of a variety of darker & lighter tones. Natural ingredients such as granite are present within the recipe to allow for a range in tones, veining and textures from one stone to another. Colour samples for reference only. Actual product colours may vary.



NEW BRANDON

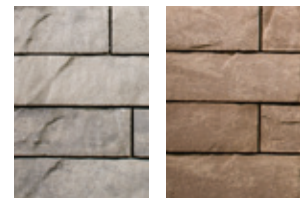
FIRE PIT COLLECTION



BRANDON RECTANGLE FIRE PIT SHALE GREY



BRANDON SQUARE FIRE PIT SHALE GREY



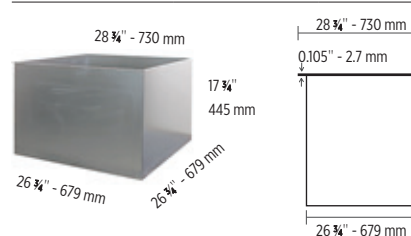
SHALE GREY

CHESTNUT BROWN

BRANDON SQUARE FIRE PIT

Overall Height	507 mm	19 5/16 in
Overall Width	1 289 mm	50 3/4 in
Overall Length	1 359 mm	53 1/2 in
Cap units	6 units	
Brandon 90 mm	30 units of A	10 units of B
Brandon 90 mm corner	20 units	

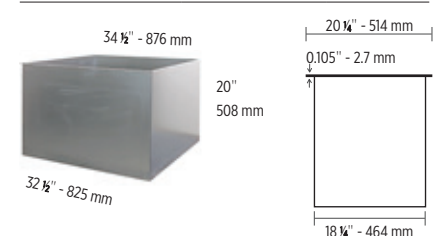
BRANDON SQUARE FIRE PIT INSERT



BRANDON RECTANGLE FIRE PIT

Overall Height	507 mm	19 5/16 in
Overall Width	1 130 mm	44 1/2 in
Overall Length	1 467 mm	57 3/4 in
Cap units	8 units	
Brandon 90 mm	10 units of B	20 units of C
Brandon 90 mm corner	20 units	

BRANDON RECTANGLE FIRE PIT INSERT



Techo-Bloc is not responsible for any damages to the fire pit if it is not installed with a sleeve or accessory kit.

COLOUR COORDINATE

For an authentic look, each colour option is composed of a variety of darker & lighter tones.

Natural ingredients such as granite are present within the recipe to allow for a range in tones, veining and textures from one stone to another.

Final colour selection should be made with your contractor from product samples or at your local dealer from stocked product.

This colour chart serves as a guide for colour selection across product lines.

SLABS	sandlewood	grey	shale grey	charcoal	red & black	mojave beige	champain grey	victoria	riviera	onyx black	rock garden brown	harvest gold	chestnut brown	autumn red	chocolate brown	ivory	azzurro	baja beige	olive	brazilian sand	brushed pewter	coral sands	smoked pine	hazelnut brandy	sauvignon oak	greyed nickel	beige cream
Solar reflectance	0.21	0.30	0.24	n/a	n/a	0.26	0.23	0.36	0.20	n/a	0.21	0.18	0.23	0.15	n/a	0.46	0.15	0.38	0.17	n/a	n/a	0.40	0.12	0.23	0.50	0.32	0.30
Solar reflectance index (SRI)	23	34	26	n/a	n/a	29	25	40	19	n/a	20	18	25	14	n/a	53	12	42	15	n/a	n/a	45	9	23	38	35	32
Aberdeen											●						●	●	●								
Blu 60 mm - Slate	●		●			●	●					●	●	●													
Blu Grande - Slate	●		●			●	●					●	●	●													
Blu 60 mm (6"×13") - Slate	●		●			●	●					●	●	●													
Blu 60 mm & Blu Grande Smooth			●				●			●			●	●												●	●
Blu 60 mm (6"×13") - Smooth			●				●			●			●	●												●	●
Blu 60 mm & Grande - Polished			●				●			●			●	●												●	●
BLU 60 mm & GRANDE - GALAXY																										●	●
Borealis																							●	●	●		
Inca								●	●									●				●					
Industria - 600 series		●		●						●																●	●
Maya								●	●									●									
Monticello										●					●			●									
Para										●																●	●
Travertina										●								●									
Tux										●																●	●
PAVERS	sandlewood	grey	shale grey	charcoal	red & black	mojave beige	champain grey	victoria	riviera	onyx black	rock garden brown	harvest gold	chestnut brown	autumn red	chocolate brown	ivory	azzurro	baja beige	olive	brazilian sand	brushed pewter	coral sands	smoked pine	hazelnut brandy	sauvignon oak	greyed nickel	beige cream
Allegro	●		●			●	●					●	●	●													
Antika	●		●			●	●			●			●	●	●												
Blu 80 mm - Slate	●		●			●	●					●	●	●													
Blu 80 mm (6"×13") - Slate	●		●			●	●			●			●	●	●												
Blu 80 mm - Smooth			●				●			●			●	●	●												
Blu 80 mm (6"×13") - Smooth			●				●			●			●	●	●												
Blu 80mm Polished			●				●			●			●	●	●												
BLU 80 mm GALAXY																										●	●
Eva	●		●			●	●					●	●	●													
Flagstone	●		●			●	●					●	●	●													
Hera - Rectangle										●					●												
Industria Collection		●		●						●																●	●
Linea	●		●				●			●			●	●	●												
Mista - Square & random Permeable	●		●			●	●					●	●	●													
Mista Grande			●				●			●			●	●	●												
Parisien - Square & Circle	●		●				●						●	●	●												
Parisien - Rectangle	●		●				●			●			●	●	●												
Pure	●		●				●						●	●	●												
San Marino	●		●				●			●			●	●	●												
Victorien 60 mm	●	●	●		●	●	●			●			●	●	●												
Victorien 60 mm Permeable	●		●				●			●			●	●	●												
Villagio	●		●			●	●			●			●	●	●												

● Pre-Order ● New ● Available ● Available 1/2 pallet

WALLS & PILLARS	sandlewood	grey	shale grey	charcoal	red & black	mojave beige	champlain grey	victoria	riviera	onyx black	rock garden brown	harvest gold	chestnut brown	autumn red	chocolate brown	ivory	azzurro	baja beige	olive	coral sands	smoked pine	hazelnut brandy	sauvignon oak	greyed nickel	beige cream	brazilian sand
Baltimore 90 mm & 180 mm	●		●				●						●													●
Borealis																					●	●	●			
Brandon	●		●				●			●			●													
Escala	●		●			●	●					●	●													
Graphix										●														●	●	
Manchester	●		●				●			●		●	●		●											
Mini-Creta 3"	●		●			●	●			●		●	●	●	●											
Mini-Creta 6" & Pillar collection	●		●			●	●			●		●	●	●	●											
Mini-Creta 6" Architectural	●		●				●			●		●	●		●											
Mini-Creta 6" Architectural & Pillar	●		●				●			●		●	●		●											
Prescott collection								●	●		●									●						
Raffinato smooth & polished collection									●	●														●	●	
Röcka									●		●				●				●							
Semma Split-Face	●		●			●	●						●													
Semma Polished			●												●											
Suprema - collection	●		●			●	●																			
STEPS, CAPS AND OVERLAY SYSTEM	sandlewood	grey	shale grey	charcoal	red & black	mojave beige	champlain grey	victoria	riviera	onyx black	rock garden brown	harvest gold	chestnut brown	autumn red	chocolate brown	ivory	azzurro	baja beige	olive	coral sands	smoked pine	hazelnut brandy	sauvignon oak	greyed nickel	beige cream	
Aged Cap	●		●			●	●			●		●	●	●	●											
ARCHITECTURAL CAP	●		●			●	●			●		●	●	●	●											
Bali Travertina Cap									●		●					●										
BRANDON CAP	●		●				●			●			●													
Bullnose Cap	●		●			●	●			●		●	●		●											
BULLNOSE GRANDE CAP										●														●	●	
Escala 3.5" Cap	●		●			●	●					●	●												●	●
GRAPHIX CAP										●														●	●	
Piedimonte Caps									●	●	●															
Portofino Cap									●	●	●				●			●			●					
Prima 14" Cap Split Face	●		●			●	●					●	●	●												
Prima 14" Cap Polished			●							●			●											●	●	
Raffinato Caps - Smooth	●		●				●			●			●											●	●	
Stonedge 28" Pillar Cap										●					●				●							
York Collection									●	●	●				●				●							
Borealis step															●						●	●	●			
Maya step									●		●				●				●							
Raffinato step - Smooth										●														●	●	
Röcka steps 48" & 60"									●		●				●				●							
York step									●		●				●				●							
Blu 45 mm Concrete Overlay System - Slate	●		●			●	●					●	●	●												
Blu 45 mm Concrete Overlay System - Smooth			●				●			●			●												●	●
Venetian Concrete Overlay System - Slate	●		●			●	●					●	●	●												
Venetian Concrete Overlay System - Smooth			●				●						●												●	●
EDGES	sandlewood	grey	shale grey	charcoal	red & black	mojave beige	champlain grey	victoria	riviera	onyx black	rock garden brown	harvest gold	chestnut brown	autumn red	chocolate brown	ivory	azzurro	baja beige	olive	coral sands	smoked pine	hazelnut brandy	sauvignon oak	greyed nickel	beige cream	
Avignon	●		●			●	●					●	●													
Borealis																					●	●	●			
Brandon	●		●				●			●			●		●											
Pietra	●		●			●	●					●	●													
Raffinato Smooth										●															●	●
Röcka									●		●				●				●							
Tundra	●		●			●	●					●	●													
OUTDOOR FEATURES	sandlewood	grey	shale grey	charcoal	red & black	mojave beige	champlain grey	victoria	riviera	onyx black	rock garden brown	harvest gold	chestnut brown	autumn red	chocolate brown	ivory	azzurro	baja beige	olive	coral sands	smoked pine	hazelnut brandy	sauvignon oak	greyed nickel	beige cream	
Grill Island	●		●			●	●			●		●	●	●	●											
Manchester Foyer Fire Place			●									●														
BRANDON FIRE PIT			●										●													
Prescott fire pit									●		●															
Raffinato fire pit																									●	●
Valencia fire pit	●		●			●	●					●	●	●												
Manchester Elite, pizza oven			●									●	●													
Manchester rustic, pizza oven			●									●	●													
Raffinato, pizza oven																									●	●

● New ● Available ◐ Available 1/2 pallet

COLOUR

Due to the inherent nature of printed literature and current digital media, Techo-Bloc cannot guarantee specific colour matching to printed representations of its colour swatches.

Each colour option is composed of a variety of darker & lighter tones. Natural ingredients such as granite are present within the recipe to allow for a range in tones, veining and textures from one stone to another. Therefore, colour samples shown are approximate representations of our standard colours and actual product colours may vary.

Final colour selection should be made at your local dealer from stocked product. Techo-Bloc always recommends immediately verifying the product and colour upon reception. If there are any discrepancies, contact your local dealer before continuing your project. Installation of the product constitutes your acceptance of the product as is.

PROPER COLOUR DISTRIBUTION AND LAYING TECHNIQUES

Proper installation enhances the overall colour of pavement. Units should be randomly picked from at least two pallets when installing. This creates an attractive and subtle blending of colour.

EFFLORESCENCE

This warranty does not apply to efflorescence. Efflorescence is a natural occurring process in all concrete products which sometimes appears in the form of a white powdery film on the pavement surface. Efflorescence is more perceivable in darker colours such as Onyx Black and Chocolate Brown as there is a higher level of contrast than with other blended colours. It does not, in any way, compromise the functionality or the structural integrity of the product. Although efflorescence cannot be prevented, it will wash off over time or can be cleaned with efflorescence cleaner. Techo-Bloc accepts no responsibility or liability for this condition.

POLYMERIC HAZE

Polymeric haze from the use of polymeric joint sand may appear on your concrete products if the sand was not removed from the surface of the paver properly. This does not, in any way, affect the integrity of the product or your installation. The hazing will weather away naturally with time and rain. It can be removed with a specialized cleaner; you are advised to contact your contractor or the polymeric sand company used for advice on recommendations. Techo-Bloc accepts no responsibility or liability for this occurrence.

CONSTRUCTION RESIDUE

A by-product of cutting with a saw is residue-filled water or concrete dust. Residue-filled water or re-hydrated dust can cling to the surface and leave a concrete stain. It is recommended to wash and remove the water or concrete dust from the surface of the pavers before it dries. Construction residue can also happen through soil disturbance or environmental elements. These contaminants should be removed immediately but do not affect the integrity of the product or your installation. Techo-Bloc accepts no responsibility or liability for these occurrences.

COMPACTOR AND SNOW REMOVAL EQUIPMENT

Pavers with an embossed surface (high and low points) are more susceptible to scuff marks from vibratory plate compactors used in most concrete paver installations. Techo-Bloc recommends the use of a urethane mat between the plate and the paver surface during compacting. Contact your equipment supplier for more information about accessories for this purpose. Also, snow removal equipment should have the proper spacing, bumpers, and rubber blade guards to protect the surface of the pavers. Techo-Bloc is not responsible for damage caused by the misuse of compaction or snow removal equipment, which may leave scuff marks, or burns on pavers.

TECHO-BLOC WARRANTY

TECHO-BLOC IS PROUD TO CERTIFY that our paving stones and retaining walls meet the latest industry standards in Canada and the United States of America. All Techo-Bloc manufactured landscape products comply with and surpass all applicable standards established by the CSA (*Canadian Standards Association*), ASTM (*American Society for Testing and Materials*) and the BNQ (*Bureau de normalisation du Québec*), recognized as the strictest standards throughout the world.

TECHO-BLOC OFFERS A TRANSFERABLE LIFETIME WARRANTY on the structural integrity of all paving stones and retaining wall stones it manufactures. It covers any disintegration and/or decomposition of the abovementioned products resulting from natural causes and the abnormal deterioration of the surface due to the use of sodium chloride (NaCl) such as de-icing salt.

IF PRODUCTS PROVE DEFECTIVE, we will replace these units. Techo-Bloc's responsibility is limited to its products only and not to the costs related to the installation of those products. Techo-Bloc will honor this transferable lifetime warranty with a proof of purchase such as an invoice or delivery slip.

STONEDGE COLLECTION WARRANTY

STONEDGE™ LANDSCAPE AND MASONRY PRODUCTS are manufactured under the highest standards of quality and workmanship. This warranty is offered to the original Consumer Purchaser (Homeowner), for as long as they own their home. STONEDGE™ warrants that the product is free from defects in material and workmanship, and is in compliance with the specifications of the Canadian Standards Association and the American Standards for testing Materials.

NOTE: This warranty does not apply to any breakage, chipping, natural wear or other deterioration that were caused from improper design or installation which does not comply with applicable codes, the ICPI (*Interlocking Concrete Pavement Institute*), NCMA (*National Concrete Masonry Association*) and recognized work procedures. This warranty does not apply to any damage resulting from a natural disaster or from a deliberate and/or negligible act on the part of the purchaser, owner of the building, installer or any third party.

For industry information about efflorescence, polymeric haze or information pertaining to installation specifications, please visit www.icpi.org or www.ncma.org.



LASTRA

PORCELAIN TILES

REQUEST A LASTRA BROCHURE ON WWW.TECHO-BLOC.COM



MASONRY

FROM THE GROUND UP

REQUEST A MASONRY CATALOG ON WWW.TECHO-BLOC.COM



**INDUSTRIAL
COMMERCIAL
INSTITUTIONAL**

MORE THAN JUST PAVERS
VISIT WWW.TECHO-BLOC.COM TO SEE ICI PRODUCTS

Redefining
LANDSCAPE PRODUCTS



Techo-Bloc
Precious Stones™

TOLL FREE : **1.877.832.4625**

Serving over 130 specialty landscape retailers in Canada. Visit techo-bloc.com to find the nearest one.